

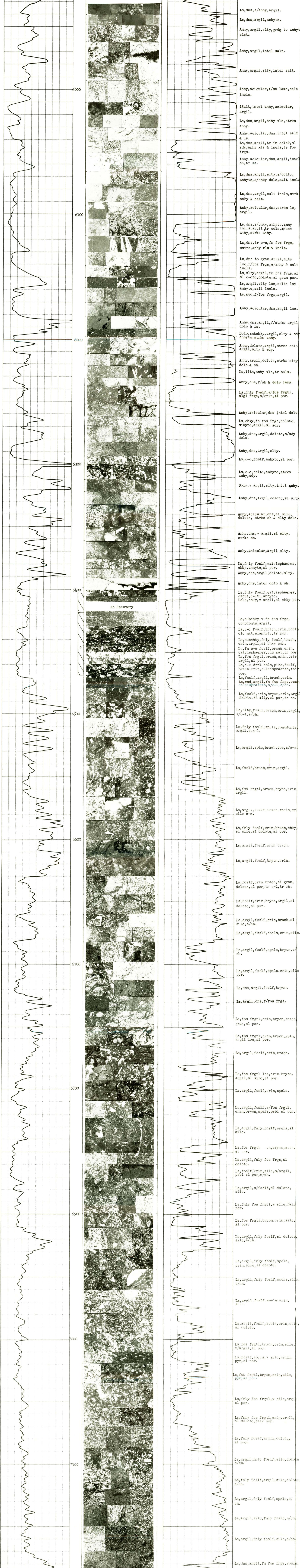
Northwest Geological Service



LOG NO. 217

COMPANY **SUN OIL CO.** LEASE AND NO. #1 **STRAKE - GOVT**
 STATE OR PROVINCE **MONTANA** COUNTY **SHERIDAN** AREA
 LOCATION **NW NE SEC 7 T 37N R 55E** GRND. ELEV **2423** **KB.2434**
 TOTAL DEPTH **7962** SPUDDED **3-19-63** COMPLETED **4-17-63**
 REMARKS **Photo Enlargement X10**

GEOLOGIC SECTION **MISSISSIPPIAN: Charles, Mission Canyon, Lodgepole** DATE **Aug. 1963**



No Recovery