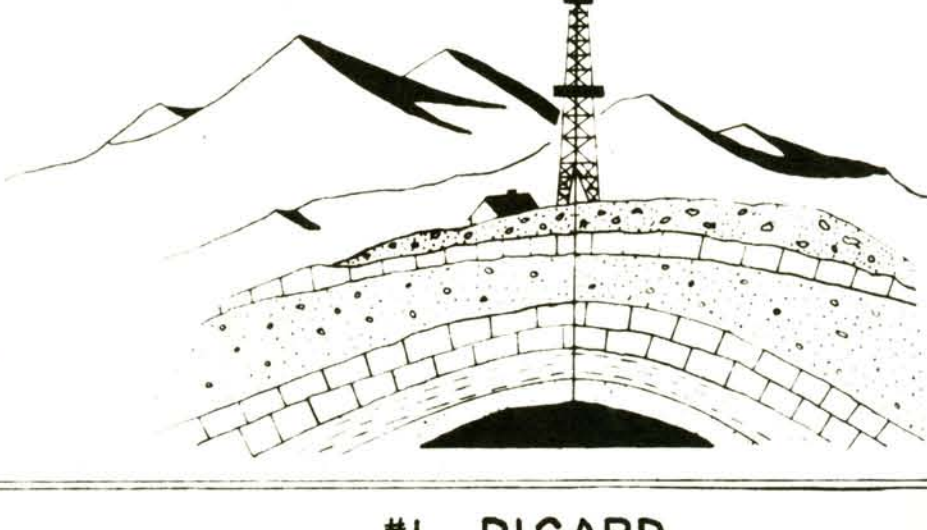


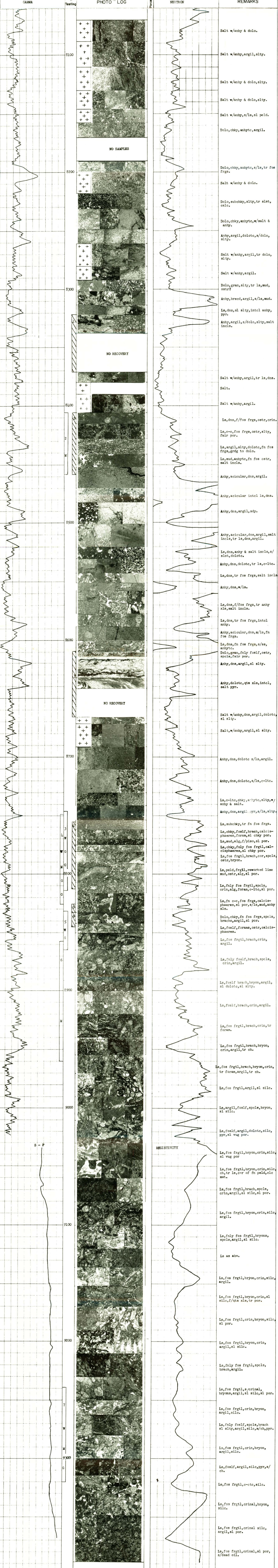
Northwest Geological Service



LOG NO 206

COMPANY **DEEP ROCK OIL CORP** LEASE AND NO **#1 PICARD**
 STATE OR PROVINCE **MONTANA** COUNTY **ROOSEVELT** AREA
 LOCATION **C NW NE** SEC **6** T **29N** R **58W** GRND. ELEV. **2229'** KB2241'
 TOTAL DEPTH **9388** SPUNDED **8-19-52** COMPLETED **2-24-62**
 REMARKS: **Photo Enlargement X10**

GEOLOGIC SECTION **MISSISSIPPIAN: Charles, Mission Canyon** DATE **MAY 1963**



S - P

RESISTIVITY