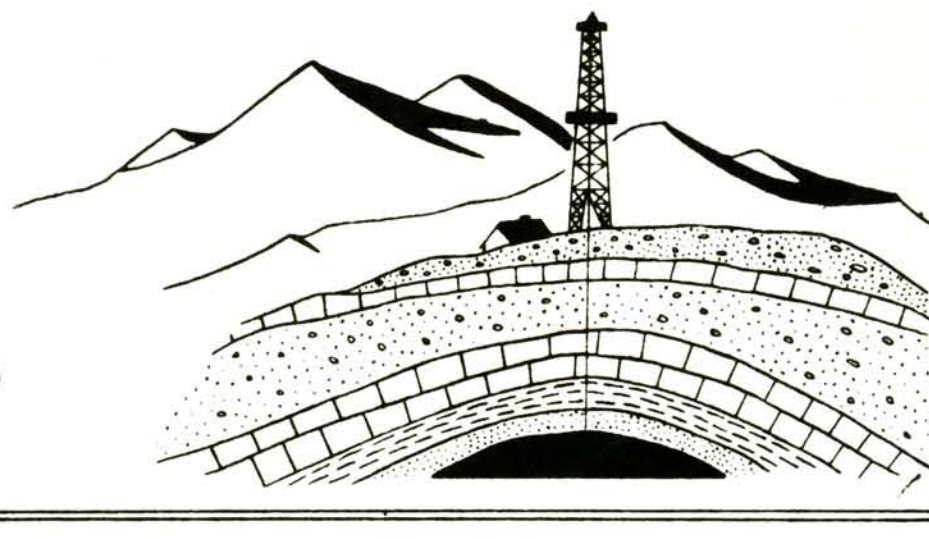


# Northwest Geological Service



LOG NO. 174

COMPANY **LION OIL COMPANY** LEASE AND NO. **Knight #1**

STATE OR PROVINCE **MONTANA** COUNTY **Wibaux** AREA



LOCATION **C SW NW** SEC. **29** T. **14N** R. **60 E** GRND. ELEV. **2765'** KB **2777'**

TOTAL DEPTH **11,153** SPUDDED **10-18-53** COMPLETED **4-30-54**

REMARKS: **Photo Enlargement X10**

GEOLOGIC SECTION **MISSISSIPPIAN: Charles, Mission Canyon** DATE **Aug 1962**

GAMMA RAY	DEPTH TESTING	PHOTO - LOG	NEUTRON	REMARKS
				Dolo, subchky, argil grdg to sh, anhy inclc, psbl salt.
				Dolo, subchky, argil.
				Dolo, subchky, argil, anhytc, f/ qtz grs.
				Ls, dns, argil.
				Ls, dns, argil, f/silt grs.
				Ls, dns, argil, f/silt grs, psbl salt inclc.
				Ls, dns, argil, f/silt grs, incl anhy, argil, psbl salt.
				Ls, dns, argil, f/silt grs, anhy inclc, psbl salt.
				Ls, dns, f/ fos frgs, c-ctc loc.
				Ls, argil, slty, f/ fos frgs, sl c-ctc.
				Ls, dns, argil, fn fos frgs anhy xls, psbl salt inclc.
				Ls, dns, fn fos frgs, anhy inclc, psbl salt.
				Anhy, acicular, dns, argil, tr slty dolo.
				Ls, dns, argil, tr c-l.
				Ls, subchky, dolotc, fn fos frgs, anhy inclc.
				Ls, dns to subchky, argil, tr fos frgs.
				Anhy, argil, slty, salt inclc, strks ls & dolo.
				Ls, argil, fn fos frgs, m/anhy, psbl salt, tr sdy dolo.
				Ls, dns to subchky, dolotc, fn fos frgs, brach.
				Anhy, argil, strks dolo, argil, slty.
				Ls, argil, dolotc, strks argil dolo, anhy inclc.
				Ls, argil, slty, dolotc, anhytc.
				Ls, argil, sl c-ltc, slty, fn fos frgs.
		NO SAMPLES		
				Ls, argil, dolotc, sl c-ltc, sl anhytc.
				Ls, fnly foslf, crin, brach, argil.
				Ls, subchky, fnly foslf, crin, brach, spcls, argil.
				Ls, fnly, foslf, crin, brach, cor, silc, argil.
				Ls, argil, slty, dolotc, foslf, spcls, bryon.
				Ls, dns, fnly foslf, bryon, crin, brach, argil, strks ls, crinal; @8706-8707.
				Ls, fnly fos frgtl, argil, f/sh lams.
				Ls, mud, sl peld, f/ ostr, m/sec anhy xls, anhy inclc.
				Ls, foslf, brach, gstrpd, reworked lime mud, chky, sl por.
				Dolo, chky, fn foslf, v anhytc.
				Ls, subchky, fnly foslf, faint peld, dolotc.
				Ls, peld, c-r, Spon giostromata, v anhytc, silc, gstrpd.
				Ls, mud, peld, ostr, alg, sec anhy, strk c-c; @8774-75.
				Anhy, dns, dolotc, argil, strks ls peld, sec anhy.
				Ls, fnly fos frgtl, brach, bryon, argil, dolotc.
				Ls, mud, sl peld, w/strks anhy.
				Ls, fnly fos frgtl, bryon, brach, s/reworked lime mud, chky, sl por.
				Ls, argil, foslf, brach, spcls, pyr.
				Ls, fnly fos frgtl, bryon, brach, crin, argil, dolotc.
				Ls, as abv, sl chky por.
				Ls as abv.
				Ls, foslf, brach, echinoids, v argil.
				Ls, foslf, chky, dolotc, sl chky por.
				Ls, fos frgtl, brach, echinoids, cor, silc, argil.
				Ls, fos frgtl, sl dolotc, sl chky & p-pt por.
				Ls, fos frgtl, brach, cor, echinoids bryon, sl dolotc.
				Ls, as abv, stylo.
				Ls, fos frgtl, bryon, brach, crin, cor, argil.
				Ls, for frgtl, brach, crin, bryon, argil.
				Ls, foslf, brach, ostr, bryon, argil.
				Ls, foslf, brach, echinoid, argil.
				Ls, as abv.
				Ls, fos frgtl, brach, crin, argil.
				Ls, foslf, crin, brach, cor, argil.
				Ls, as abv, tr c-l.
				Ls, foslf, brach, bryon, argil.
				Ls, as abv.
				Ls, fos frgtl, brach, crin, argil.
				Ls, foslf, argil, sl silc, stylo.
				Ls, fos frgtl, echinoids, crin, brach, argil.
				Ls, foslf, crin, brach, argil.
				Ls, fos frgtl, argil, c-ctc, loc.
				Ls, foslf, c-ctc, argil, sl silc, sl por.
				Ls, foslf, argil, dolotc.
				Ls, foslf, dolotc, argil.
				Ls, foslf, argil, sl dolotc.
				Ls, c-ctc, foslf, argil.
				Ls, foslf, argil, dolotc.
				Ls, foslf, c-ctc, argil, sl por.
				Ls, foslf, c-ctc, argil.
				Ls, c-ctc, foslf, argil, pyr.
				Ls, foslf, argil, sl c-ltc.
				Ls, foslf, c-ctc, argil.
				Ls, c-ctc, foslf, argil, sl dolotc.
				Ls, c-ctc, foslf, argil.
				Ls, c-ltc, foslf, argil, sl dolotc.
				Ls, c-l, argil, foslf.