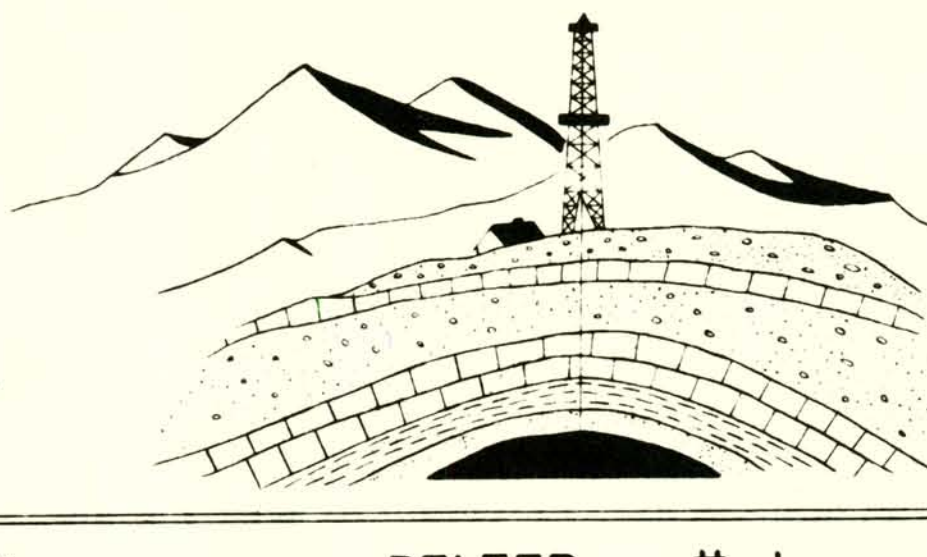


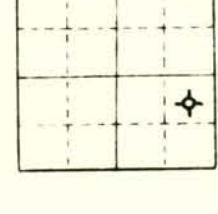
# Northwest Geological Service



LOG NO 59

COMPANY AMERADA PETROLEUM CORPORATION LEASE AND NO BELZER #1

STATE OR PROVINCE MONTANA COUNTY VALLEY AREA

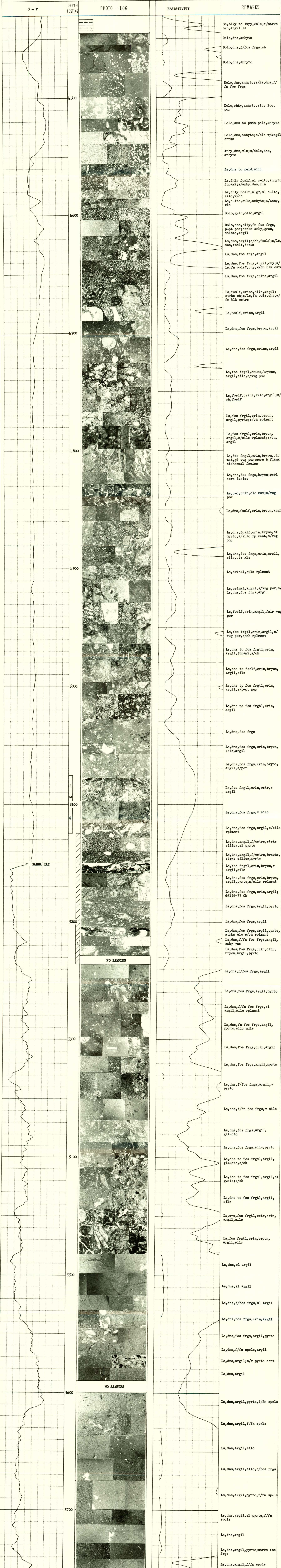


LOCATION C NE SE SEC. 29 T. 29N R. 40E GRND. ELEV. 2347' 2360' K.B.

TOTAL DEPTH 6097' SPUDED 7-21-55 COMPLETED 8-31-55

REMARKS: Photo Enlargement X10

GEOLOGIC SECTION MISSISSIPPIAN: Charles, Mission Canyon, Lodgepole DATE OCT. 1959



GAMMA RAY

NO SAMPLES

NO SAMPLES