

Montana Bureau of Mines and Geology
Open File No. 443

Geologic Map of the
Sweet Grass Hills 30' x 60' Quadrangle,
North-central Montana

David A. Lopez

2002

To view a full scale version of this map, [click here](#).

For the text files with the map information, [click here](#).

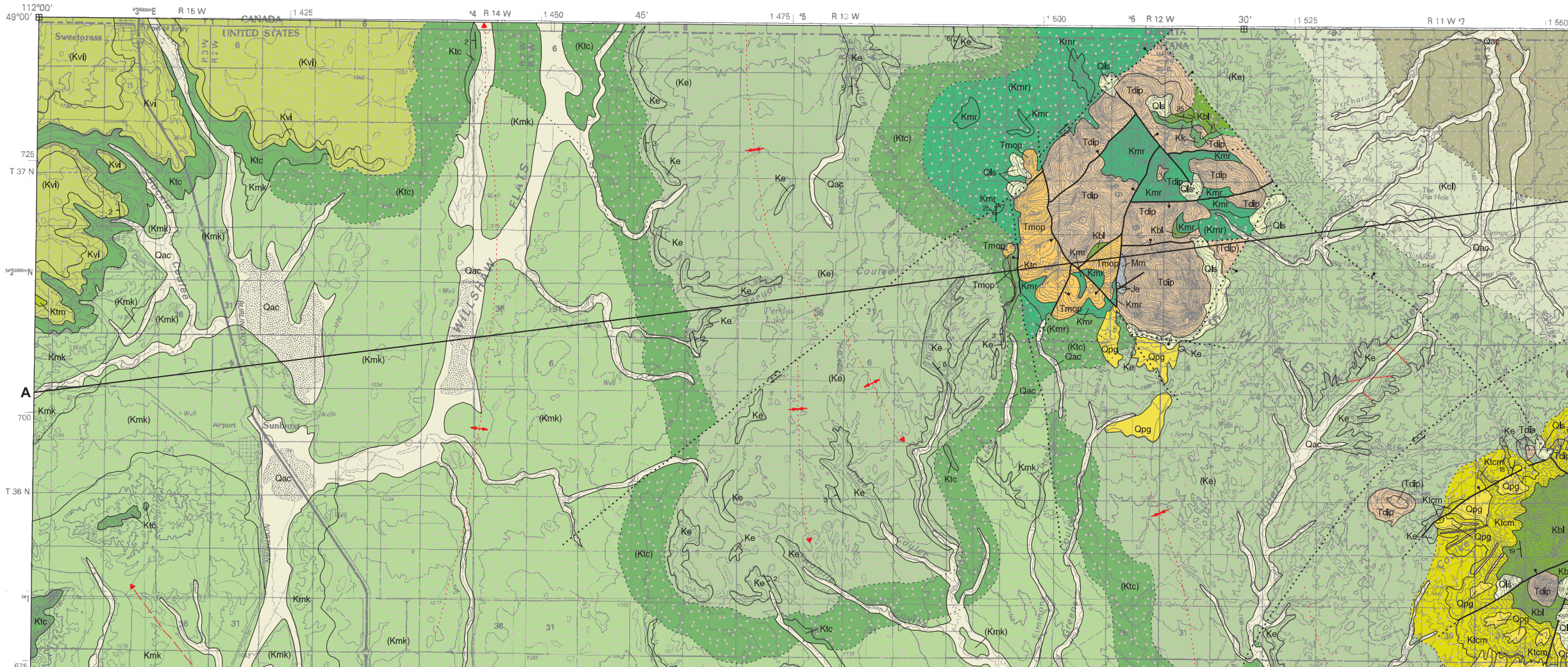
[Digital data link](#)

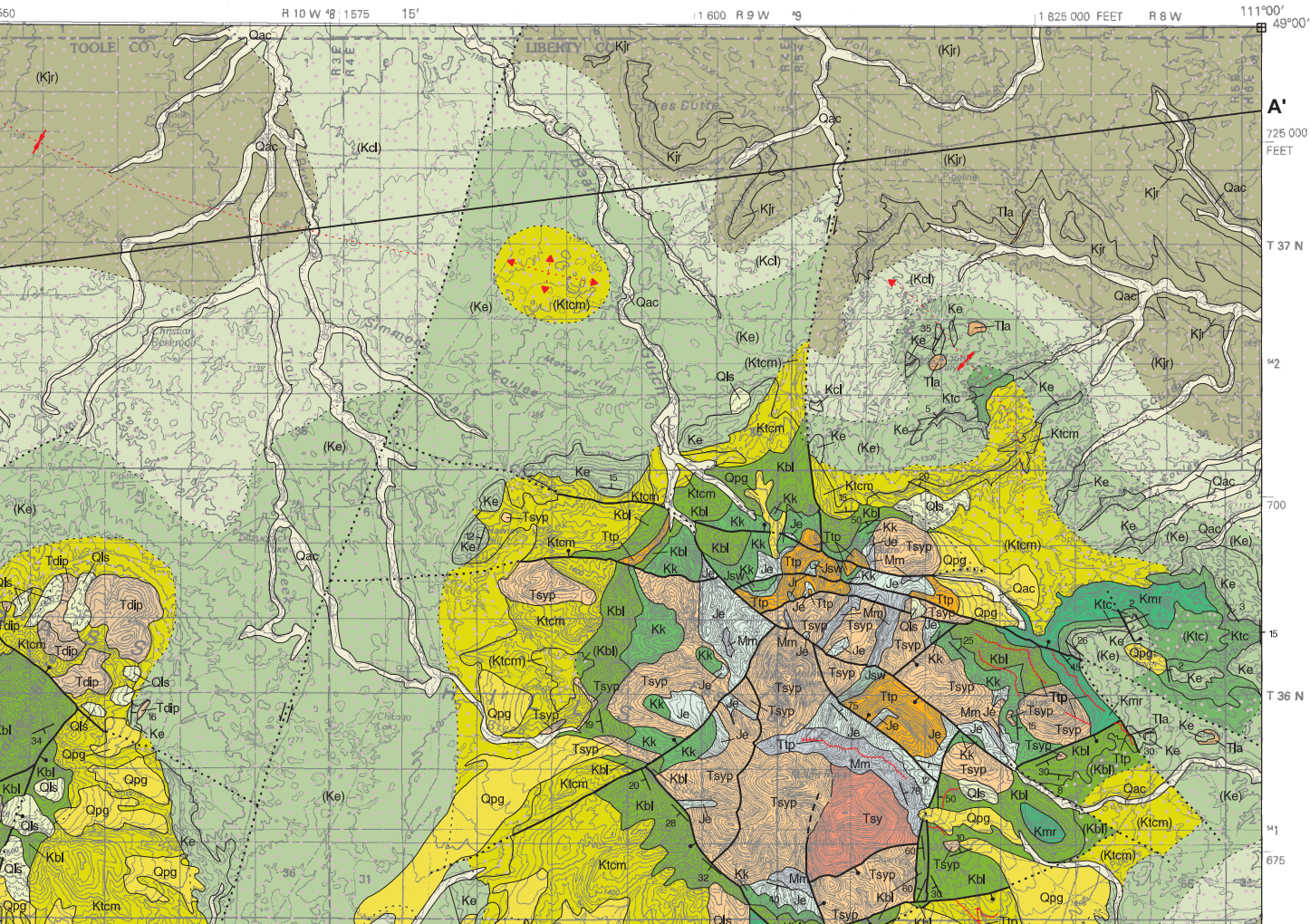
Note— This map was originally published at a scale of 1;100,000 but the page sizes have been modified to fit average printer capabilities (8½ x 14; legal size paper). There is a an eighth inch overlap on these pages. A full sized colored print of this map can be ordered from the **MBMG Publication Sales Office, 1300 West Park Street, Butte, MT, 59701-8997.**

Phone: 406-496-4167

Email: pubsales@mbmg.mtech.edu

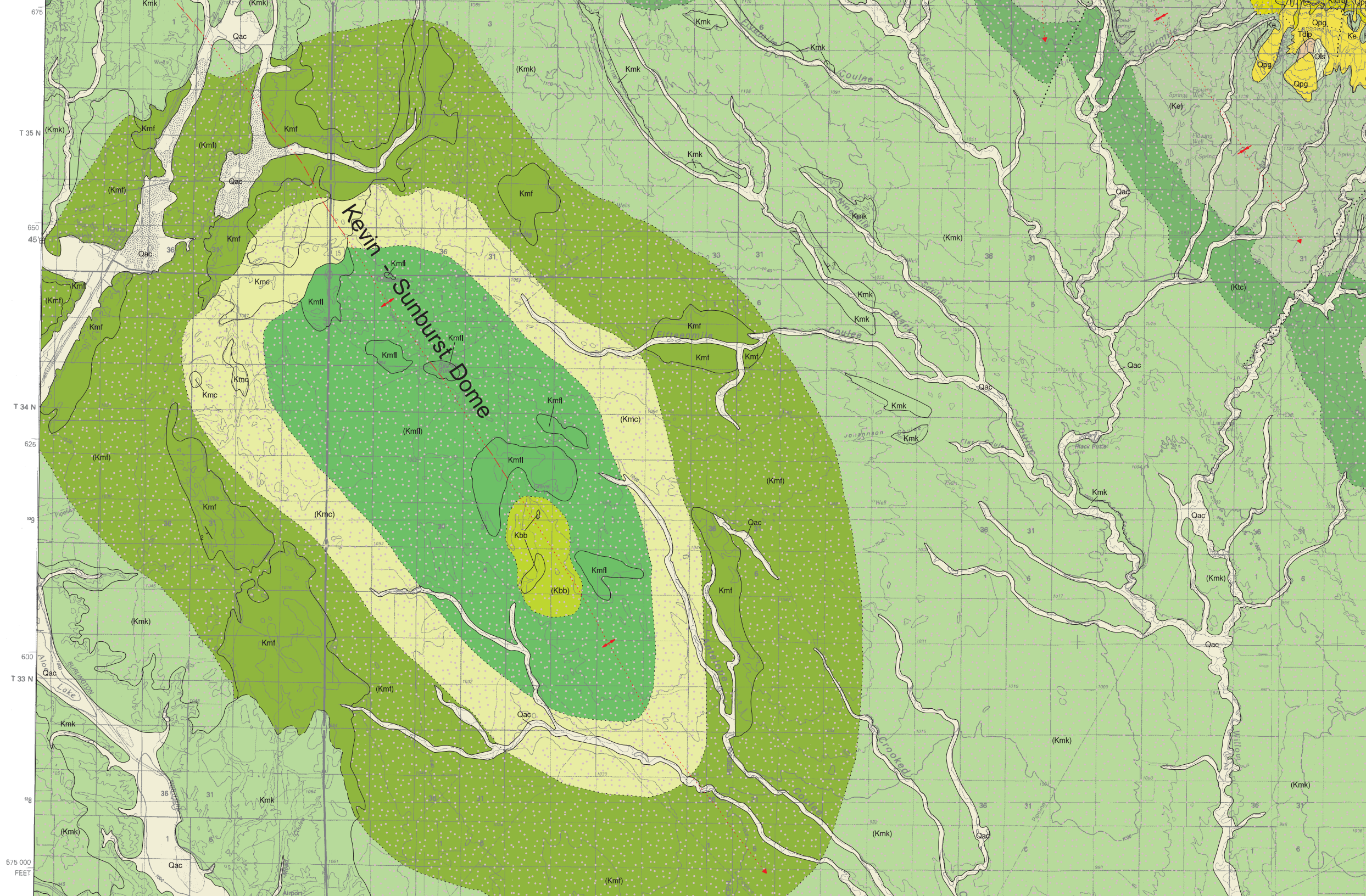
Open File MBMG 443, Plate 1 of 1
Geologic Map, Sweet Grass Hills 30'x60' Quadrangle





MAP UNITS

Qac	Alluvium-colluvium
Qls	Landslide deposit
Qpg	Pediment gravel
Qg	Glacial deposits, undivided
Tdap	Diorite porphyry
Ttb	Felsite breccia
Tla	Lamprophyre
Tmop	Monzonite porphyry
Tsy	Syenite
Tsyp	Syenite porphyry
Ttp	Trachyte porphyry
Ktm	Two Medicine Formation



Kevin-Sunburst Dome

T 35 N

650
45

T 34 N

625

T 33 N

600

675 000
FEET

(Kml)

(Kmk)

36

31

6

(Kmk)

36

31

6

(Kmk)

36

31

6

(Kmk)

36

31

6

(Kmk)

36

31

6

(Kmk)

36

31

6

(Kmk)

36

31

6

(Kmk)

36

31

6

(Kmk)

36

31

6

(Kmk)

36

31

6

(Kmk)

36

31

6

(Kmk)

36

31

6

(Kmk)

36

31

6

(Kmk)

36

31

6

(Kmk)

36

31

6

(Kmk)

36

31

6

(Kmk)

36

31

6

(Kmk)

36

31

6

(Kmk)

36

31

6

(Kmk)

36

31

6

(Kmk)

36

31

6

(Kmk)

36

31

6

(Kmk)

36

31

6

(Kmk)

36

31

6

(Kmk)

36

31

6

(Kmk)

36

31

6

(Kmk)

36

31

6

(Kmk)

36

31

6

(Kmk)

36

31

6

(Kmk)

36

31

6

(Kmk)

36

31

6

(Kmk)

36

31

6

(Kmk)

36

31

6

(Kmk)

36

31

6

(Kmk)

36

31

6

(Kmk)

36

31

6

(Kmk)

36

31

6

(Kmk)

36

31

6

(Kmk)

36

31

6

(Kmk)

36

31

6

(Kmk)

36

31

6

(Kmk)

36

31

6

(Kmk)

36

31

6

(Kmk)

36

31

6

(Kmk)

36

31

6

(Kmk)

36

31

6

(Kmk)

36

31

6

(Kmk)

36

31

6

(Kmk)

36

31

6

(Kmk)

36

31

6

(Kmk)

36

31

6

(Kmk)

36

31

6

(Kmk)

36

31

6

(Kmk)

36

31

6

(Kmk)

36

31

6

(Kmk)

36

31

6

(Kmk)

36

31

6

(Kmk)

36

31

6

(Kmk)

36

31

6

(Kmk)

36

31

6

(Kmk)

36

31

6

(Kmk)

36

31

6

(Kmk)

36

31

6

(Kmk)

36

31

6

(Kmk)

36

31

6

(Kmk)

36

31

6

(Kmk)

36

31

6

(Kmk)

36

31

6

(Kmk)

36

31

6

(Kmk)

36

31

6

(Kmk)

36

31

6

(Kmk)

36

31

6

(Kmk)

36

31

6

(Kmk)

36

31

6

(Kmk)

36

31

6

(Kmk)

36

31

6

(Kmk)

36

31

6

(Kmk)

36

31

6

(Kmk)

36

31

6

(Kmk)

36

31

6

(Kmk)

36

31

6

(Kmk)

36

31

6

(Kmk)

36

31

6

(Kmk)

36

31

6

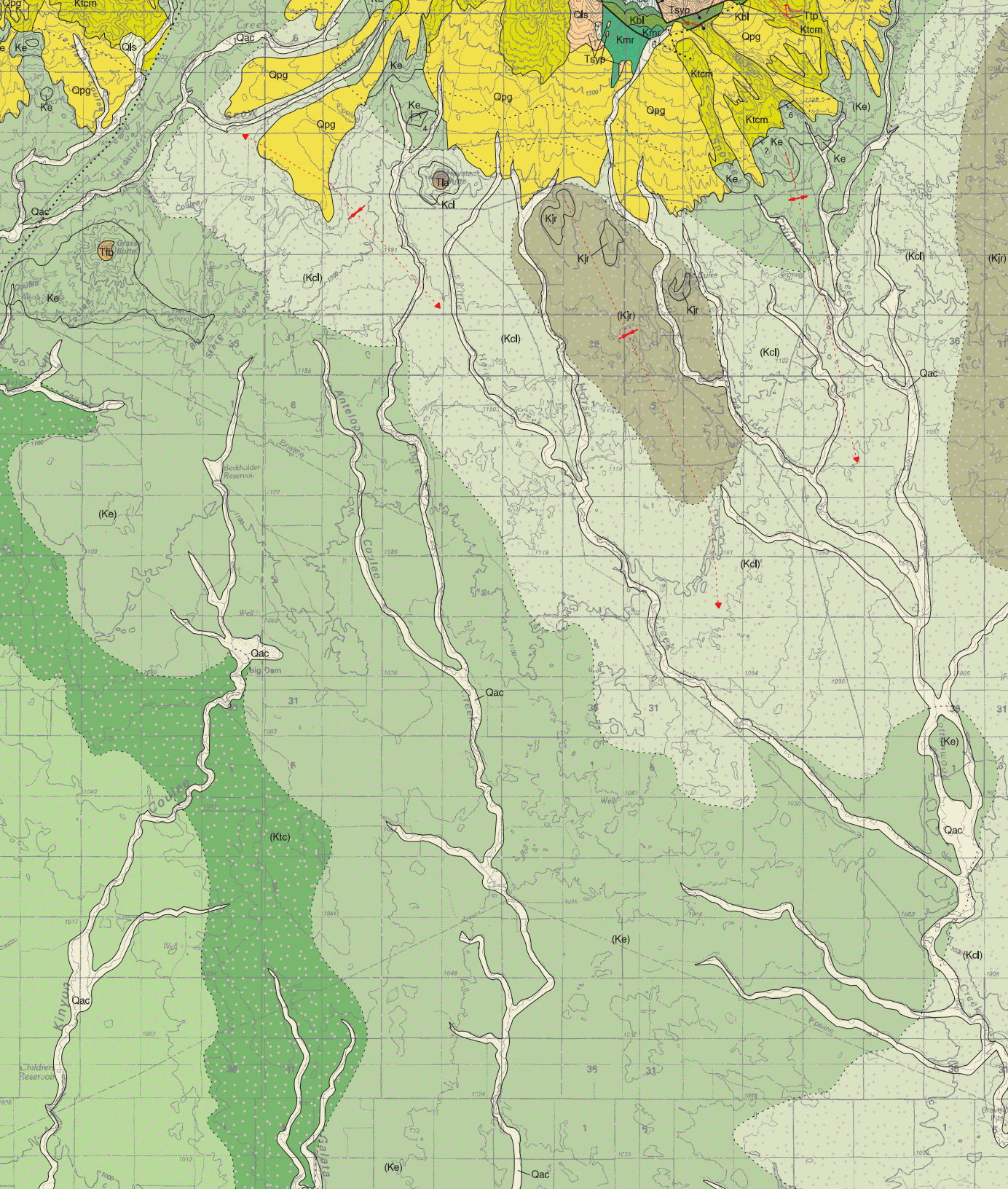
(Kmk)

36

31

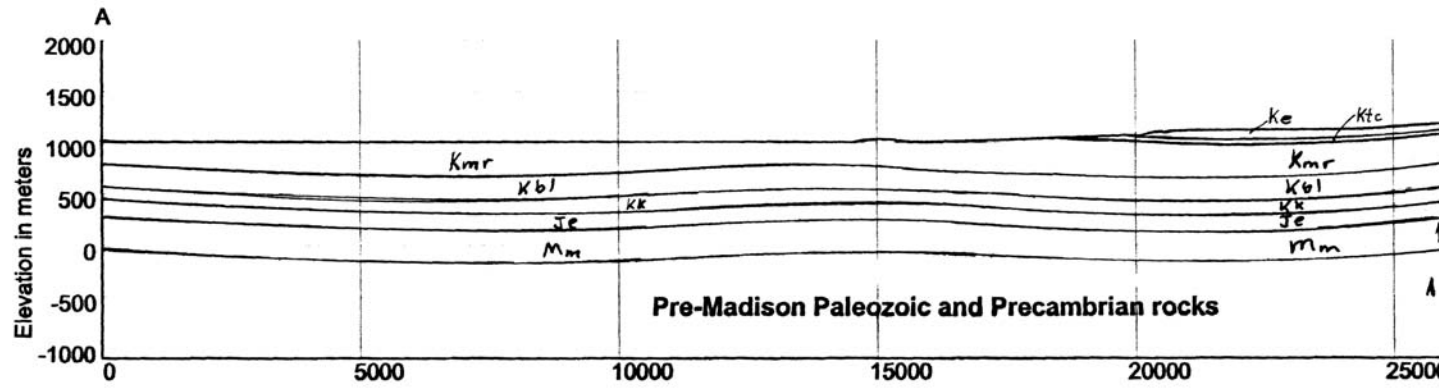
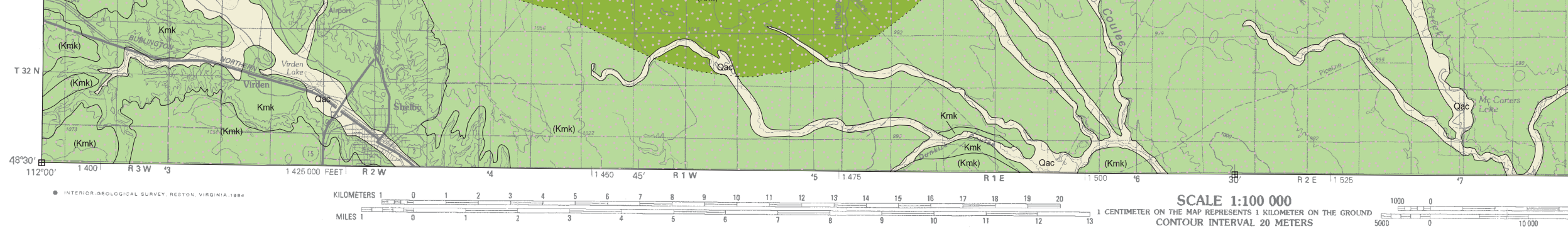
6

(Kmk)



- Ktm Two Medicine Formation
- Kjr Judith River Formation
- Kcl Claggett Shale
- Ke Eagle Formation
- Kvi Virgelle Formation
- Ktc Telegraph Creek Formation
- Ktcm Telegraph Creek Formation and Marias River Formation, undivided
- Kmr Marias River Formation, undivided
- Kmk Kevin Member of Marias River Formation
- Kmf Ferdig Member of Marias River Formation
- Kmc Cone Member of Marias River Formation
- Kmf1 Floweree Member of Marias River Formation
- Kbl Blackleaf Formation, undivided
- Kbb Bootlegger Member of Blackleaf Formation
- Kk Kootenai Formation
- Je Ellis Group, undivided
- Jsw Swift Formation
- Jr Rierdon Formation
- Mm Madison Group, undivided





Surficial deposits not shown
 Datum: mean sea level
 Unit thickness in meters (ft/3.28)

Montana Bureau of Mines and Geology
 Open File No. 443

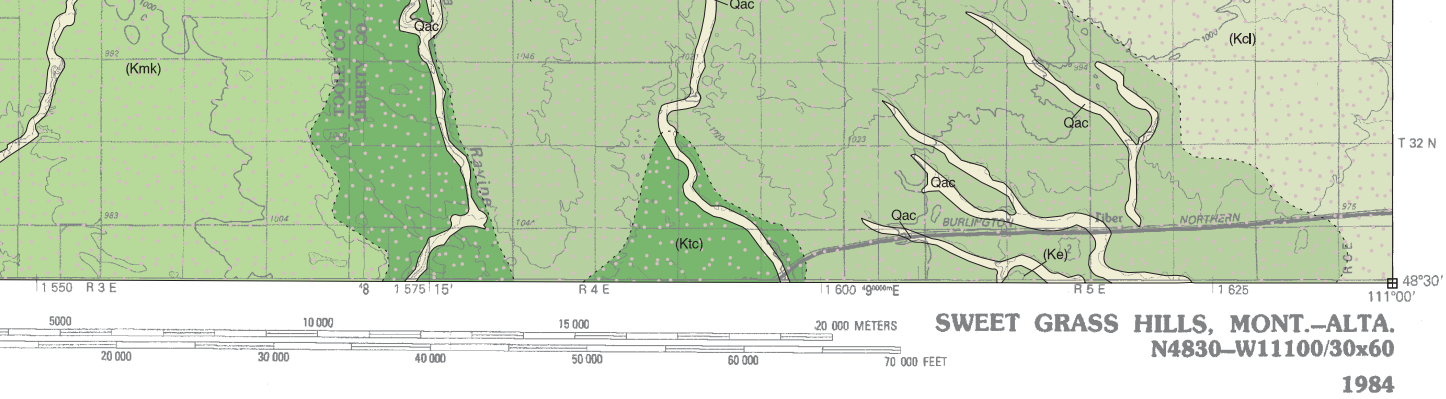
Geologic Map of the Sweet Grass Hills 30' x 60' Quadrangle North-central Montana

David A. Lopez

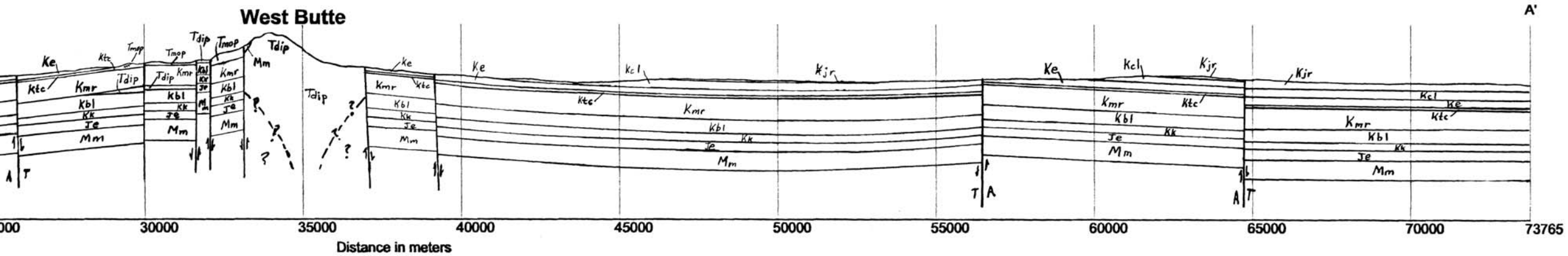
2002

Partial support has been provided by the STATEMENT
 Mapping Program of the U.S. Geological Survey un

GIS production: Ken Sandau and Paul Thale, MBM

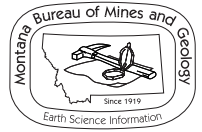


Cross Section A-A'
 Vertical exaggeration x2.0



MAP component of the National Cooperative Geologic
 under Contract Number 01-HQ-AG-0096.

BMG. Map layout: Susan Smith, MBMG



Maps may be obtained from
 Publications Office
 Montana Bureau of Mines and Geology
 1300 West Park Street, Butte, Montana 59701-8997
 Phone: (406) 496-4167 Fax: (406) 496-4451
<http://www.mbmtech.edu>