

Montana Bureau of Mines and Geology
Open File No. 499

Geologic and Structure Contour Map of the
Fort Peck West 30' x 60' Quadrangle
Eastern Montana

Edith M. Wilde and Robert N. Bergantino

2004

To view a full scale version of this map, [click here](#).

For the text files with the map information, [click here](#).

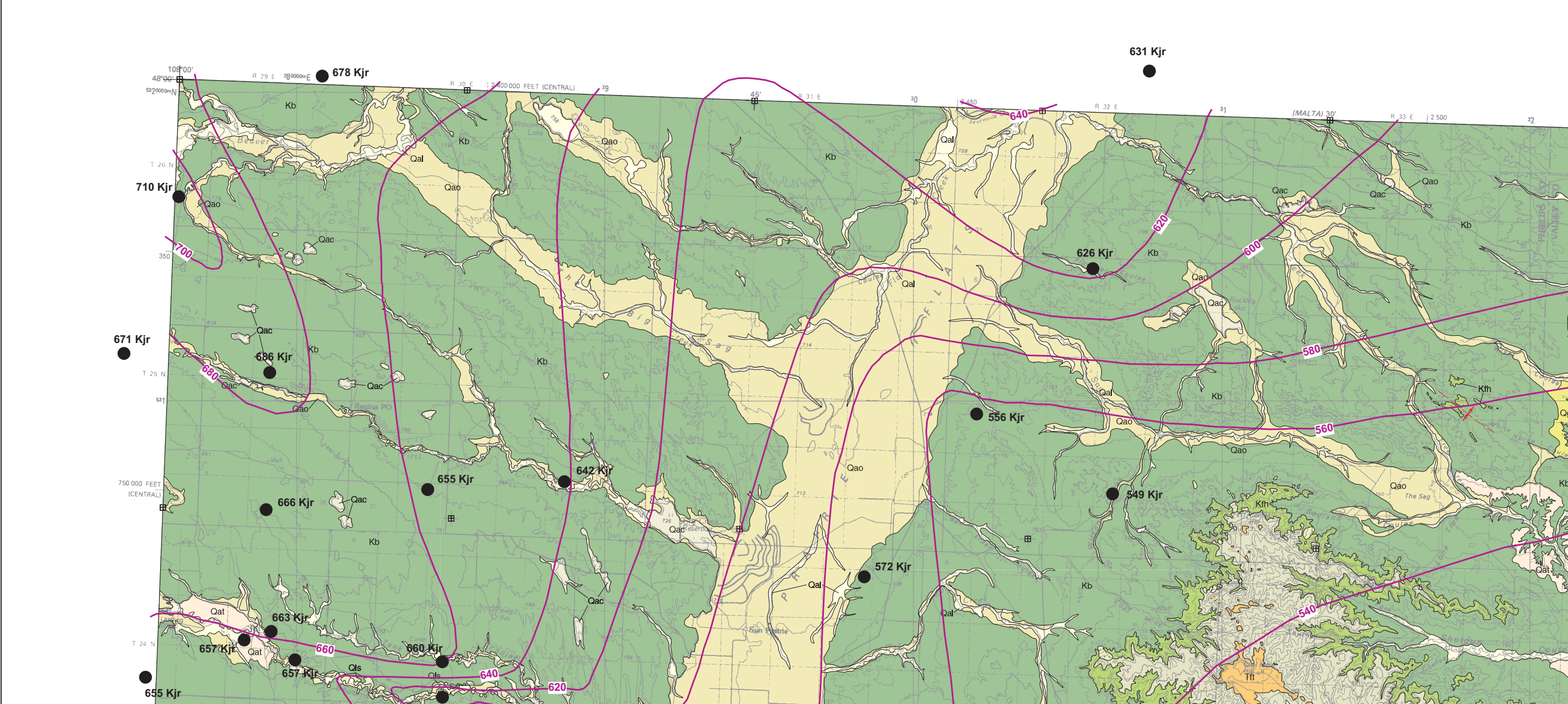
[Digital data link](#)

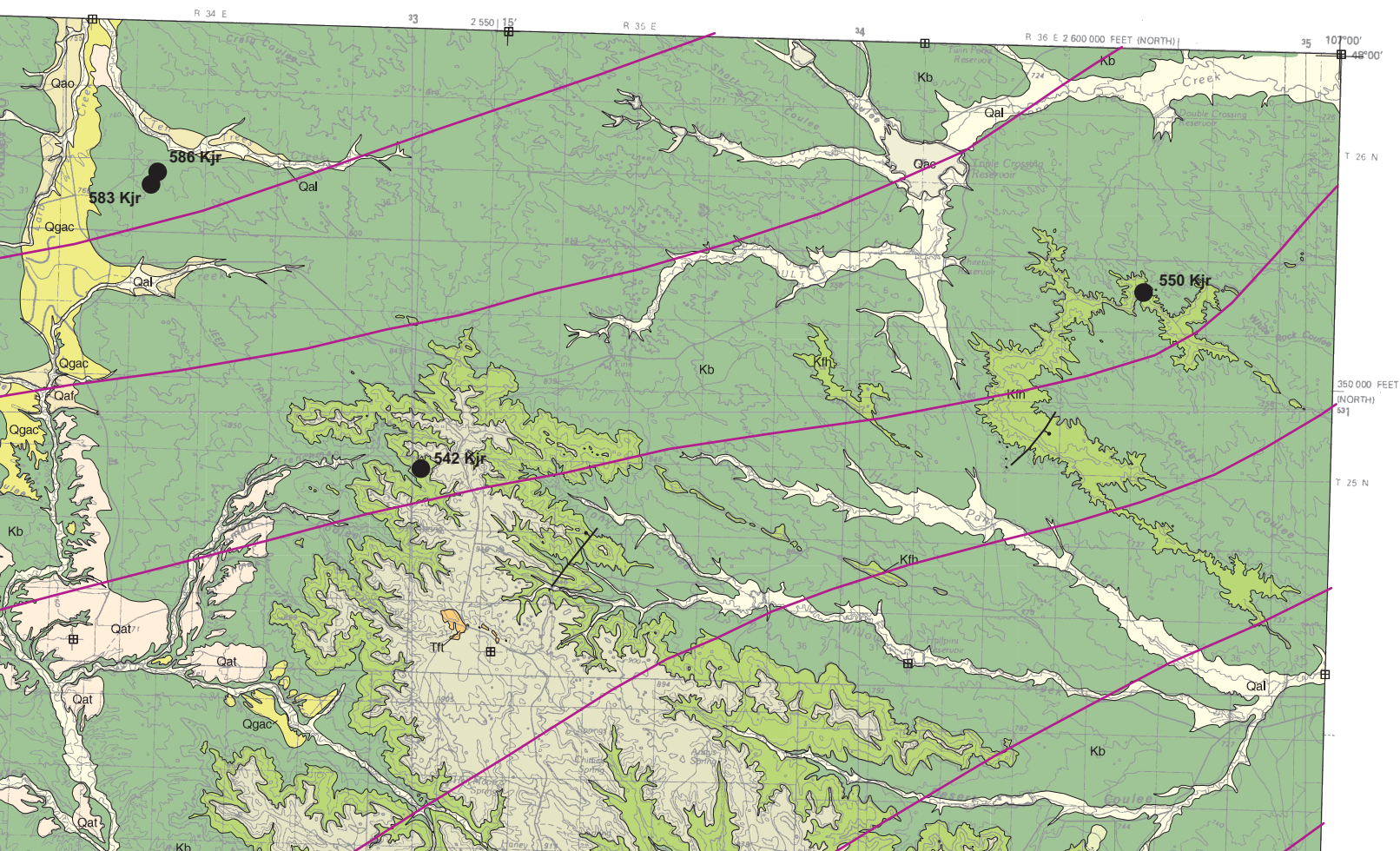
Note— This map was originally published at a scale of 1;100,000 but the page sizes have been modified to fit the average printer capabilities (8½ x 14; legal size paper). There is a an eighth inch overlap on these pages. A full sized colored print of this map can be ordered from the **MBMG Publication Sales Office, 1300 West Park Street, Butte, MT, 59701-8997.**

Phone: 406-496-4167

Email: pubsales@mbmg.mtech.edu

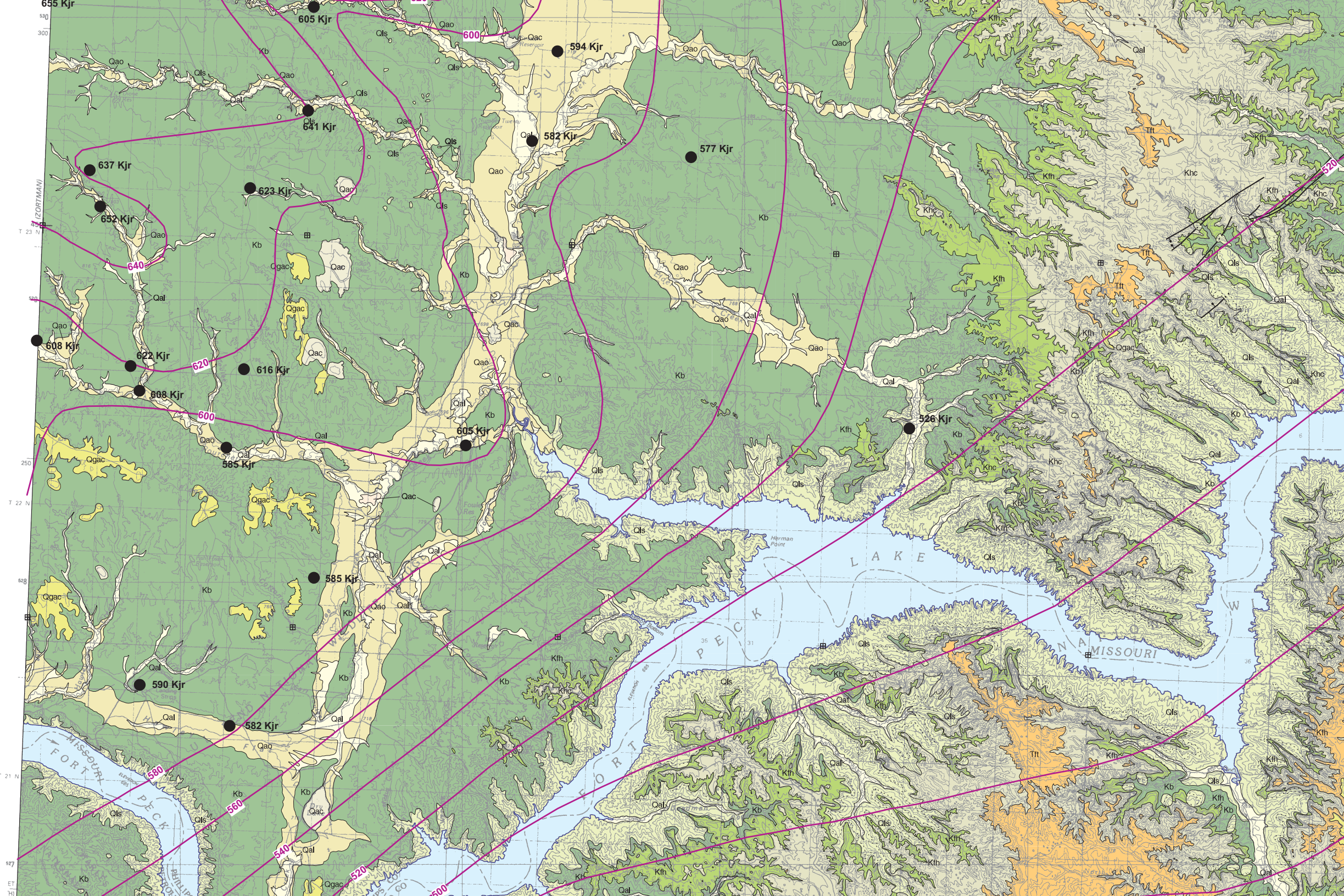
Open File MBMG 499, Plate 1 of 1
Geologic Map, Fort Peck Lake West 30'x60' Quadrangle





MAP UNITS

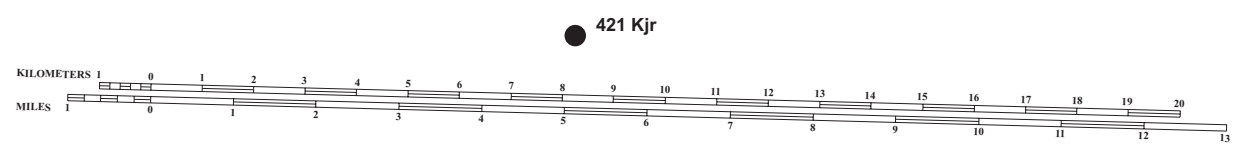
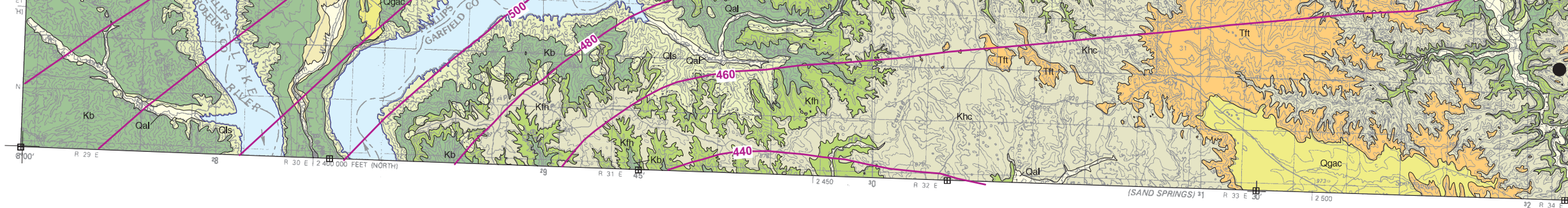
Qal	Alluvium of modern channels and flood plains
Qaf	Alluvial fan deposit
Qat	Alluvium of alluvial terrace deposit
Qao	Alluvium, older, undivided
Qac	Alluvium-colluvium
Qgac	Gravelly sheetwash alluvium and colluvium
Qls	Landslide deposit
Tfl	Lebo Member of Fort Union Formation
Tft	Tullock Member of Fort Union Formation
Khc	Hell Creek Formation
Kfh	Fox Hills Formation
Kb	Bearpaw Shale
W	Water



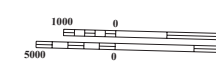


630
T 24 N
300
415'
29
T 23 N
T 22 N
750
650 000 FEET
(CENTRAL)
T 21 N
5270000mN

(FORT PECK LAKE EAST)



SCALE 1:100 000
 1 CENTIMETER ON THE MAP REPRESENTS 1 KILOMETER ON THE GROUND
 CONTOUR INTERVAL 20 METERS



Montana Bureau of Mines and Geology
 Open File No. 499

Geologic and Structure Contour Map of the Fort Peck Lake West 30' x 60' Quadrangle Eastern Montana

Edith M. Wilde and Robert N. Bergantino

2004

Structure contours in meters on top of the Judith River Formation

Contour interval: 20 meters (1 meter = 3.281 feet)
 Datum: mean sea level

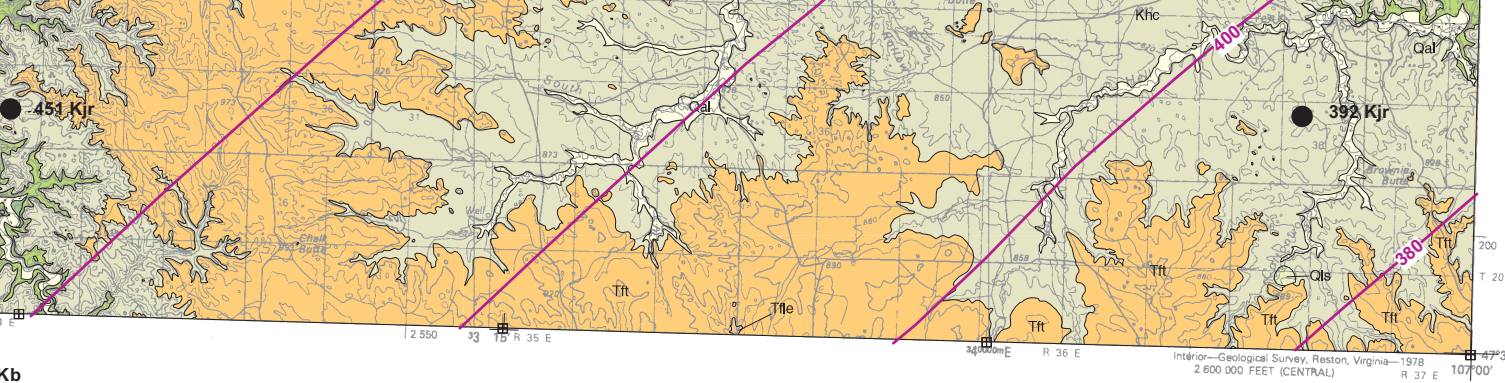


Structure contours on top of the Judith River Formation

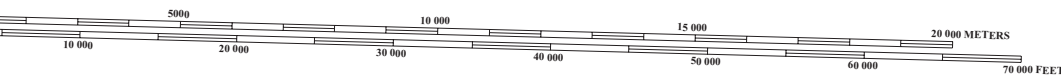


Well control point
 621 Kh = top of Pierre (Bearpaw) Shale
 311 Kjr = top of Judith River Formation

Partial support has been provided by
 Mapping Program of the U.S. Geological Survey
 GIS production: Ken Sandau and Paul



Kb
Kjr



Formation

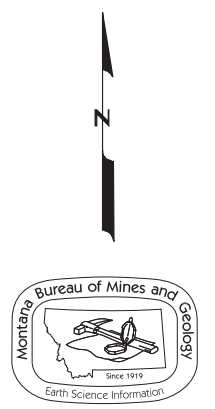
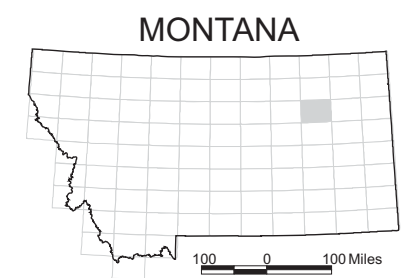
feet)

formation (Kjr) in meters

hale (meters)
tion (meters)

by the STATEMAP component of the National Cooperative Geologic
logical Survey under Contract Number 03HQAG0090.

Paul Thale, MBMG. Map layout: Susan Smith, MBMG.



Maps may be obtained from
Publications Office
Montana Bureau of Mines and Geology
1300 West Park Street, Butte, Montana 59701-8997
Phone: (406) 496-4167 Fax: (406) 496-4451
<http://www.mbmng.mtech.edu>