

Montana Bureau of Mines and Geology
Open File No. 363

Geologic Map of the Butte 1° x 2° Quadrangle

Reed S. Lewis

1998

To view a full scale version of this map, [click here](#).

For the text files with the map information, [click here](#).

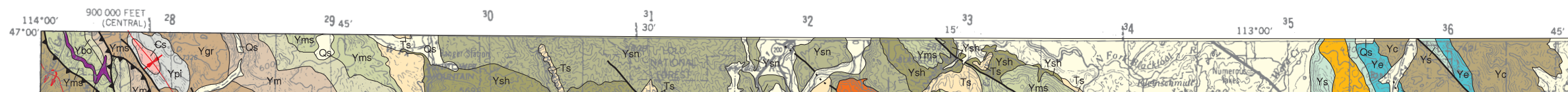
[Digital data link](#)

Note— This map was originally published at a scale of 1;100,000 but the page sizes have been modified to fit average printer capabilities (8½ x 14; legal size paper). There is a an eighth inch overlap on these pages. A full sized colored print of this map can be ordered from the **MBMG Publication Sales Office, 1300 West Park Street, Butte, MT, 59701-8997.**

Phone: [406-496-4167](tel:406-496-4167)

Email: pubsales@mbmg.mtech.edu

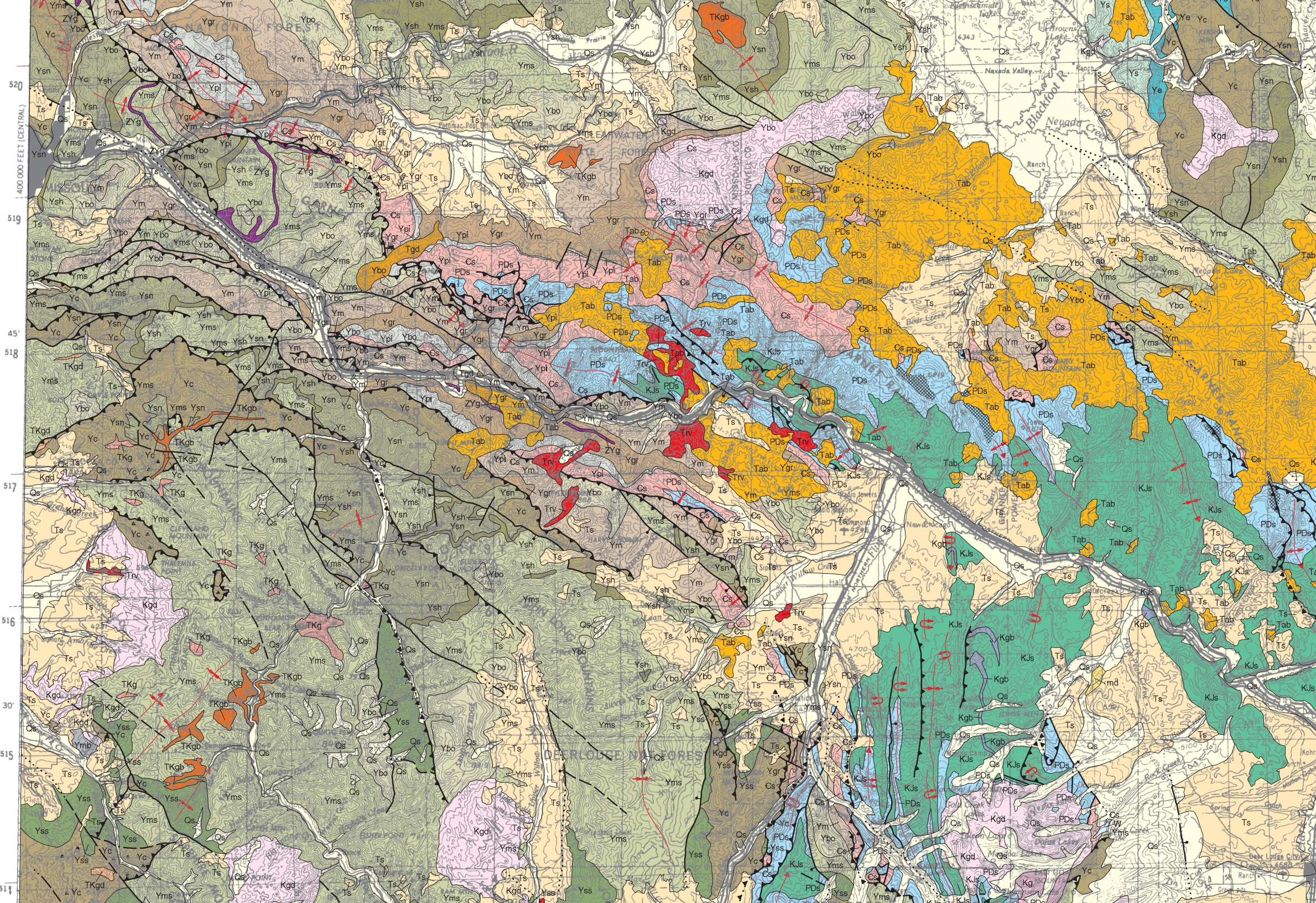
Open File MBMG 363, Plate 1 of 1
Geologic Map, Butte 1° x 2° Quadrangle

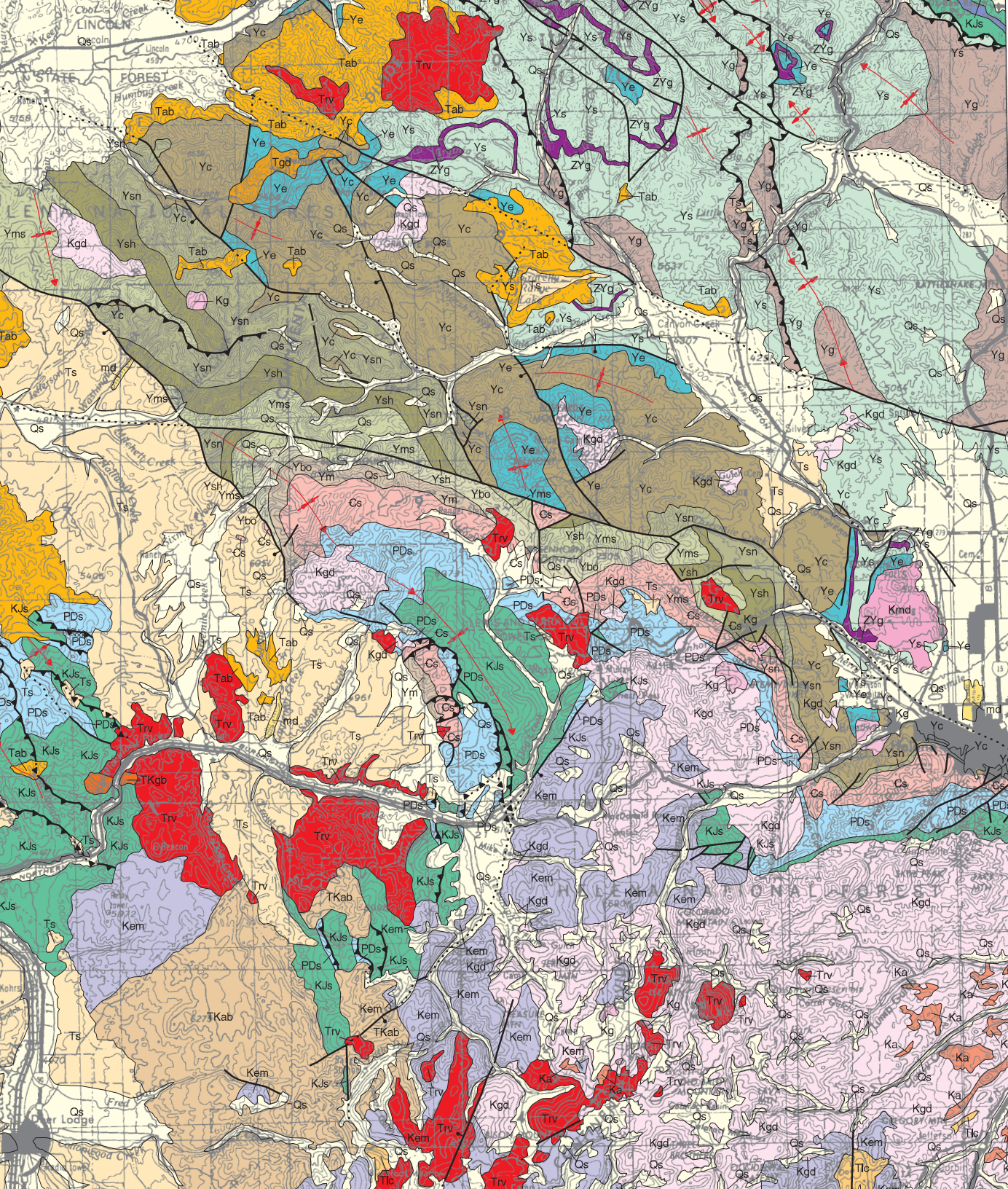


MONTANA BUREAU OF MINES AND GEOLOGY
A Department of Montana Tech of The University of Montana



MAP UNITS





1:100,000 FEET (50)

519

518

45'

517

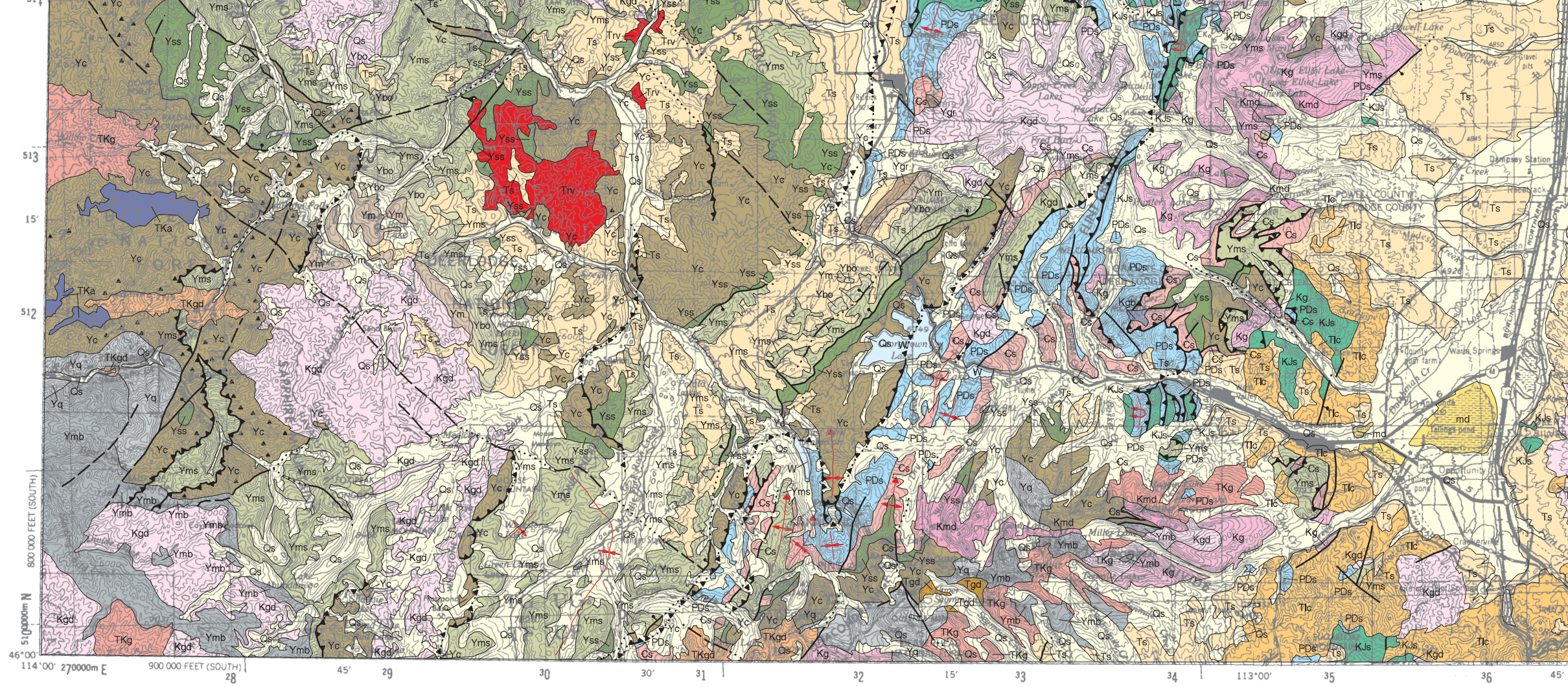
515

30'

514

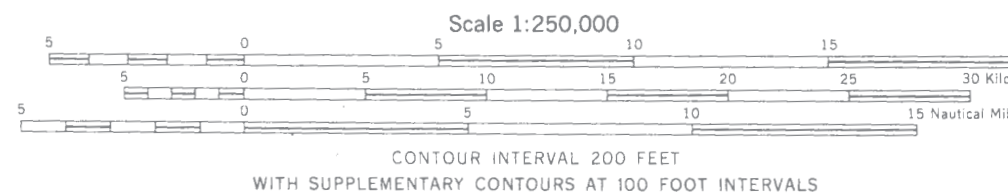
MAP UNITS

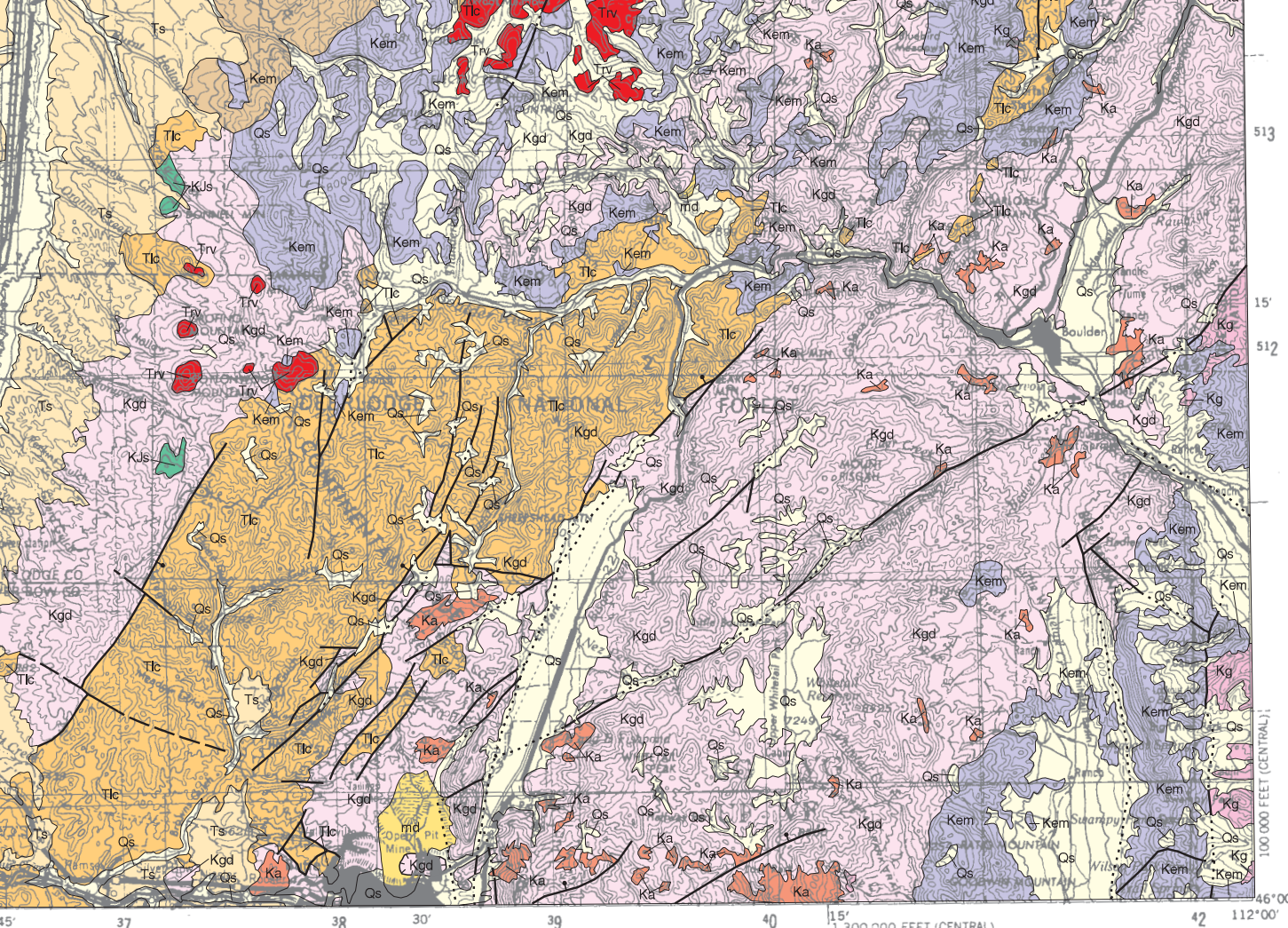
- md Tailings, mine dumps, and slag piles (Holocene)
- Qs Surficial sedimentary deposits (Pleistocene and Holocene)
- Ts Sedimentary deposits and rocks (Eocene through Pliocene)
- Trv Rhyolitic volcanic rocks (Eocene through Miocene)
- Tab Andesitic and basaltic rocks (Eocene and Oligocene)
- Tgd Granodioritic rocks (Eocene)
- Tlc Lowland Creek Volcanics (Eocene)
- TKab Andesitic and basaltic volcanic rocks (Tertiary or Cretaceous)
- TKg Granitic rocks (Tertiary or Cretaceous)
- TKgd Granodioritic rocks (Tertiary or Cretaceous)
- TKgb Gabbroic rocks (Tertiary or Cretaceous)
- TKa Alkalic rocks (Tertiary or Cretaceous)
- Ka Aplitic rocks (Cretaceous)
- Kg Granitic rocks (Cretaceous)
- Kgd Granodioritic rocks (Cretaceous)
- Kmd Monzodioritic rocks (Cretaceous)
- Kgb Gabbroic rocks (Cretaceous)
- KI Latite sill (Cretaceous)
- Kem Elkhorn Mountains Volcanics (Cretaceous)
- KJs Sedimentary rocks (Cretaceous and Jurassic)
- PDs Sedimentary rocks (Permian through Devonian)
- Cs Sedimentary rocks (Cambrian)
- ZYg Gabbroic rocks (Middle or Late Proterozoic)
- Ypi Pilcher Quartzite (Middle Proterozoic)
- Ygr Garnet Range Formation (Middle Proterozoic)
- Ym McNamara Formation (Middle Proterozoic)
- Ybo Bonner Quartzite (Middle Proterozoic)
- Yms Mount Shields Formation (Middle Proterozoic)
- Yss Snowslip and Shepard Formations (Middle Proterozoic)
- Ysh Shepard Formation (Middle Proterozoic)
- Ysn Snowslip Formation (Middle Proterozoic)
- Yc Middle Belt carbonate (Middle Proterozoic)
- Ye Empire Formation (Middle Proterozoic)



Geologic Map of the Butte 1° x 2° Quadrangle

Reed S. Lewis
1998





- Ye Empire Formation (Middle Proterozoic)
- Ys Spokane Formation (Middle Proterozoic)
- Yg Greyson Formation (Middle Proterozoic)
- Yq Quartzite of the Belt Supergroup (Middle Proterozoic)
- Ymb Metamorphosed rocks of the Belt Supergroup (Middle Proterozoic)
- W Water



Partial support has been provided by the STATEMAP component of the National Cooperative Geologic Mapping Program of the U.S. Geological Survey under Contract Number 1434-HQ-96-AG-01500.

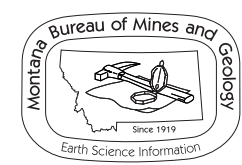
20 Statute Miles
 0 10 20 Kilometers
 0 10 20 Miles

145° 37' 38' 39' 40' 41' 42' 112° 00'

15' 512' 513'

100,000 FEET (CENTRAL)

1 300 000 FEET (CENTRAL)



Maps may be obtained from
 Publications Office
 Montana Bureau of Mines and Geology
 1300 West Park Street, Butte, Montana 59701-8997
 Phone: (406) 496-4167 Fax: (406) 496-4451
<http://www.mbm.mtech.edu>