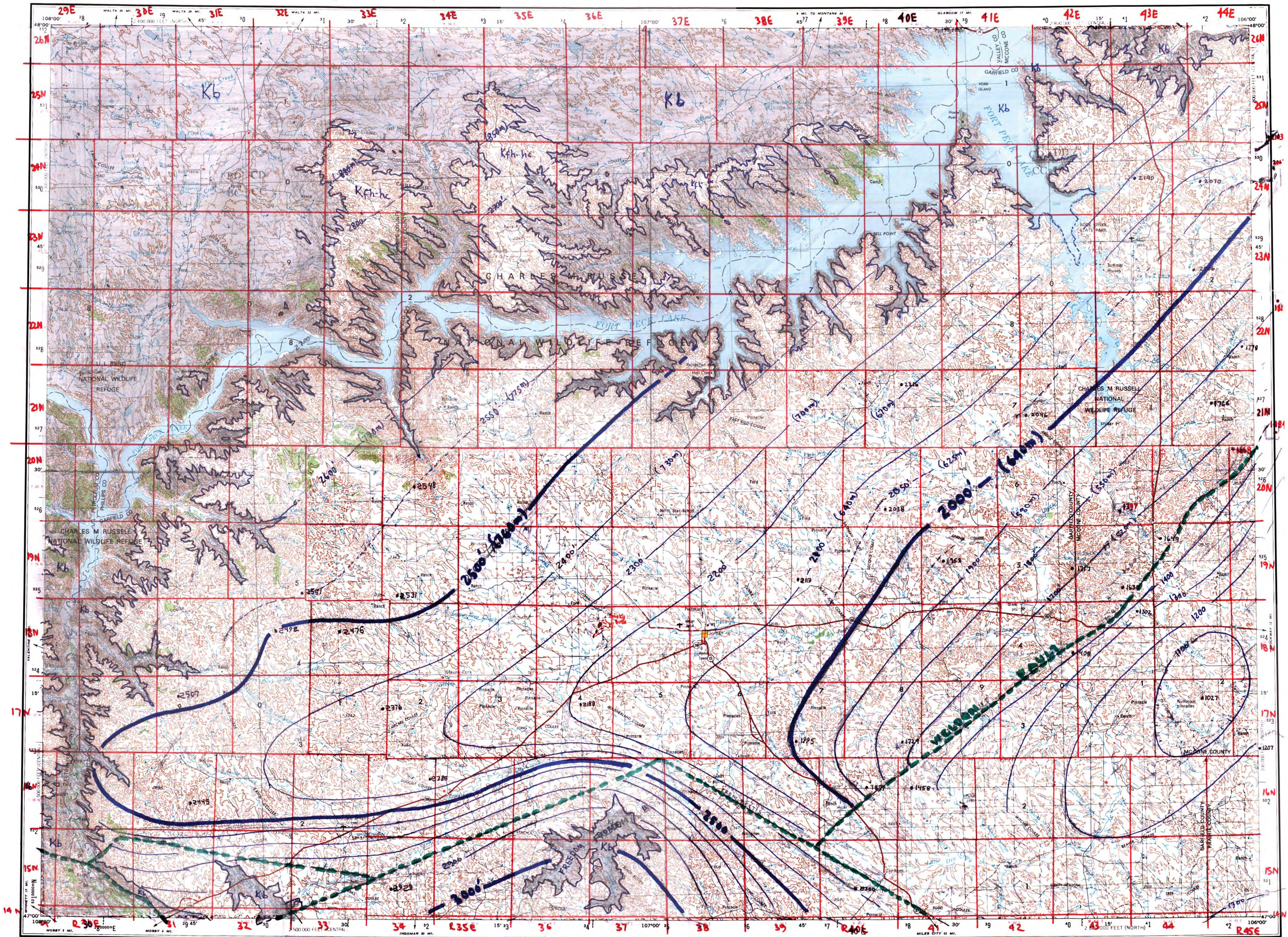


WESTERN UNITED STATES 1:250,000 Top (level) of the Bearpaw Formation

JORDAN

NL 13-1



Prepared by the Defense Mapping Agency Topographic Center, Washington, D. C. Completed in 1955 by photogrammetric methods, and from aerial photographs taken 1951-52. Photographs field annotated 1954. Revised in 1977 by the U. S. Geological Survey from aerial photographs taken 1973.
100,000-foot grid based on Montana coordinate system, central and north zones.
Location of geodetic control established by government agencies is shown on corresponding 1:250,000-scale Geodetic Control Diagram
Data points from:
Feltis, R.D., Lewis, B.D., Freure, R.L., Rioux, R.P., Jauhola, C.A., and Hotchkiss, W.R., 1981. Selected Geologic Data from the Northern Great Plains area of Montana: U.S. Geological Survey Water-Resources Investigations Open-file report 81-415, 63 p., Contoured by R.N. Bergantino, 1982

LEGEND

Figures in red denote approximate distances in miles between stars

POPULATED PLACES

- Over 500,000
- 100,000 to 500,000
- 25,000 to 100,000
- 5,000 to 25,000
- 1,000 to 5,000
- Less than 1,000

ROADS

- Primary, all-weather, hard surface
- Secondary, all-weather, hard surface
- Light-duty, all-weather, hard or improved surface
- Fair or poor weather, unimproved surface
- Trail
- Interchange
- Route markers: Interstate (U.S., State)
- Landmark: School, Church, Other, etc.
- Mine
- Spot elevation in feet
- Marsh or swamp
- Intermittent or dry stream
- Power line

RAILROADS

- Single-track double or multiple
- Standard gauge
- Narrow gauge

BOUNDARIES

- International
- State
- County
- Park or reservation

LANDPLANE AIRPORT

- Landing area
- Seaplane airport
- Seaplane anchorage
- Woods brushwood

MBMG

faults from Feltis, 1981 GM-16

Scale 1:250,000

CONTOUR INTERVAL 100 FEET
TRANSVERSE MERCATOR PROJECTION

BLACK NUMBERED LINES INDICATE THE 10,000 METER UNIVERSAL TRANSVERSE MERCATOR GRID, ZONE 13

1975 MAGNETIC DECLINATION FROM TRUE NORTH VARIES FROM 16W TO 12W 1200 MILES EASTERLY FOR THE CENTER OF THE WEST EDGE TO 15° 12' 00" W 1200 MILES EASTERLY FOR THE CENTER OF THE EAST EDGE

FOR SALE BY U.S. GEOLOGICAL SURVEY, DENVER, COLORADO 80225, OR RESTON, VIRGINIA 22092

Top of the Bearpaw Shale, feet, mean sea level

LOCATION DIAGRAM

ALBERTA SASKATCHEWAN

CANADA

UNITED STATES

MISSOURI

NEBRASKA

NEVADA

UTAH

WYOMING

IDAHO

MONTANA

WISCONSIN

ILLINOIS

INDIANA

MICHIGAN

OHIO

PENNSYLVANIA

DELAWARE

MARYLAND

DELaware

VIRGINIA

NORTH CAROLINA

SOUTH CAROLINA

MISSISSIPPI

ALABAMA

LOUISIANA

TEXAS

OKLAHOMA

KANSAS

NEBRASKA

NEVADA

UTAH

WYOMING

IDAHO

MONTANA

WISCONSIN

ILLINOIS

INDIANA

MICHIGAN

OHIO

PENNSYLVANIA

DELAWARE

MARYLAND

DELaware

VIRGINIA

NORTH CAROLINA

SOUTH CAROLINA

MISSISSIPPI

ALABAMA

LOUISIANA

TEXAS

OKLAHOMA

KANSAS

NEBRASKA

NEVADA

UTAH

WYOMING

IDAHO

MONTANA

WISCONSIN

ILLINOIS

INDIANA

MICHIGAN

OHIO

PENNSYLVANIA

DELAWARE

MARYLAND

DELaware

VIRGINIA

NORTH CAROLINA

SOUTH CAROLINA

MISSISSIPPI

ALABAMA

LOUISIANA

TEXAS

OKLAHOMA

KANSAS

NEBRASKA

NEVADA

UTAH

WYOMING

IDAHO

MONTANA

WISCONSIN

ILLINOIS

INDIANA

MICHIGAN

OHIO

PENNSYLVANIA

DELAWARE

MARYLAND

DELaware

VIRGINIA

NORTH CAROLINA

SOUTH CAROLINA

MISSISSIPPI

ALABAMA

LOUISIANA

TEXAS

OKLAHOMA

KANSAS

NEBRASKA

NEVADA

UTAH

WYOMING

IDAHO

MONTANA

WISCONSIN

ILLINOIS

INDIANA

MICHIGAN

OHIO

PENNSYLVANIA

DELAWARE

MARYLAND

DELaware

VIRGINIA

NORTH CAROLINA

SOUTH CAROLINA

MISSISSIPPI

ALABAMA

LOUISIANA

TEXAS

OKLAHOMA

KANSAS

NEBRASKA

NEVADA

UTAH

WYOMING

IDAHO

MONTANA

WISCONSIN

ILLINOIS

INDIANA

MICHIGAN

OHIO

PENNSYLVANIA

DELAWARE

MARYLAND

DELaware

VIRGINIA

NORTH CAROLINA

SOUTH CAROLINA

MISSISSIPPI

ALABAMA

LOUISIANA

TEXAS

OKLAHOMA

KANSAS

NEBRASKA

NEVADA

UTAH

WYOMING

IDAHO

MONTANA

WISCONSIN

ILLINOIS

INDIANA

MICHIGAN

OHIO

PENNSYLVANIA

DELAWARE

MARYLAND

DELaware

VIRGINIA

NORTH CAROLINA

SOUTH CAROLINA

MISSISSIPPI

ALABAMA

LOUISIANA

TEXAS

OKLAHOMA

KANSAS

NEBRASKA

NEVADA

UTAH

WYOMING

IDAHO

MONTANA

WISCONSIN

ILLINOIS

INDIANA

MICHIGAN

OHIO

PENNSYLVANIA

DELAWARE

MARYLAND

DELaware

VIRGINIA

NORTH CAROLINA

SOUTH CAROLINA

MISSISSIPPI

ALABAMA

LOUISIANA

TEXAS

OKLAHOMA

KANSAS

NEBRASKA

NEVADA

UTAH

WYOMING

IDAHO

MONTANA

WISCONSIN

ILLINOIS

INDIANA

MICHIGAN

OHIO

PENNSYLVANIA

DELAWARE

MARYLAND

DELaware

VIRGINIA

NORTH CAROLINA

SOUTH CAROLINA

MISSISSIPPI

ALABAMA

LOUISIANA

TEXAS

OKLAHOMA

KANSAS

NEBRASKA

NEVADA

UTAH

WYOMING

IDAHO

MONTANA

WISCONSIN

ILLINOIS

INDIANA

MICHIGAN

OHIO

PENNSYLVANIA

DELAWARE

MARYLAND

DELaware

VIRGINIA

NORTH CAROLINA

SOUTH CAROLINA

MISSISSIPPI

ALABAMA

LOUISIANA

TEXAS

OKLAHOMA

KANSAS

NEBRASKA

NEVADA

UTAH

WYOMING

IDAHO

MONTANA

WISCONSIN

ILLINOIS

INDIANA

MICHIGAN

OHIO

PENNSYLVANIA

DELAWARE

MARYLAND

DELaware

VIRGINIA

NORTH CAROLINA

SOUTH CAROLINA

MISSISSIPPI

ALABAMA

LOUISIANA

TEXAS

OKLAHOMA

KANSAS

NEBRASKA

NEVADA

UTAH

WYOMING

IDAHO

MONTANA

WISCONSIN

ILLINOIS

INDIANA

MICHIGAN

OHIO

PENNSYLVANIA

DELAWARE

MARYLAND

DELaware

VIRGINIA

NORTH CAROLINA

SOUTH CAROLINA

MISSISSIPPI

ALABAMA

LOUISIANA

TEXAS

OKLAHOMA

KANSAS

NEBRASKA

NEVADA

UTAH

WYOMING

IDAHO

MONTANA

WISCONSIN

ILLINOIS

INDIANA

MICHIGAN

OHIO

PENNSYLVANIA

DELAWARE

MARYLAND

DELaware

VIRGINIA

NORTH CAROLINA

SOUTH CAROLINA

MISSISSIPPI

ALABAMA

LOUISIANA

TEXAS

OKLAHOMA

KANSAS

NEBRASKA

NEVADA

UTAH

WYOMING

IDAHO

MONTANA

WISCONSIN

ILLINOIS

INDIANA

MICHIGAN

OHIO

PENNSYLVANIA

DELAWARE

MARYLAND

DELaware

VIRGINIA

NORTH CAROLINA

SOUTH CAROLINA

MISSISSIPPI

ALABAMA

LOUISIANA

TEXAS

OKLAHOMA

KANSAS

NEBRASKA

NEVADA

UTAH

WYOMING

IDAHO

MONTANA

WISCONSIN

ILLINOIS

INDIANA

MICHIGAN

OHIO

PENNSYLVANIA

DELAWARE

MARYLAND

DELaware

VIRGINIA

NORTH CAROLINA

SOUTH CAROLINA

MISSISSIPPI

ALABAMA

LOUISIANA

TEXAS

OKLAHOMA

KANSAS

NEBRASKA

NEVADA

UTAH

WYOMING

IDAHO

MONTANA

WISCONSIN

ILLINOIS

INDIANA

MICHIGAN

OHIO

PENNSYLVANIA

DELAWARE

MARYLAND

DELaware

VIRGINIA

NORTH CAROLINA

SOUTH CAROLINA

MISSISSIPPI

ALABAMA

LOUISIANA

TEXAS

OKLAHOMA

KANSAS

NEBRASKA

NEVADA

UTAH

WYOMING

IDAHO

MONTANA

WISCONSIN

ILLINOIS

INDIANA

MICHIGAN

OHIO

PENNSYLVANIA

DELAWARE

MARYLAND

DELaware

VIRGINIA

NORTH CAROLINA

SOUTH CAROLINA

MISSISSIPPI

ALABAMA

LOUISIANA

TEXAS

OKLAHOMA

KANSAS

NEBRASKA

NEVADA

UTAH

WYOMING

IDAHO

MONTANA

WISCONSIN

ILLINOIS

INDIANA

MICHIGAN

OHIO

PENNSYLVANIA

DELAWARE

MARYLAND

DELaware

VIRGINIA

NORTH CAROLINA

SOUTH CAROLINA

MISSISSIPPI

ALABAMA

LOUISIANA

TEXAS

OKLAHOMA

KANSAS

NEBRASKA

NEVADA

UTAH

WYOMING

IDAHO

MONTANA

WISCONSIN

ILLINOIS

INDIANA

MICHIGAN

OHIO

PENNSYLVANIA

DELAWARE

MARYLAND

DELaware

VIRGINIA

NORTH CAROLINA

SOUTH CAROLINA

MISSISSIPPI

ALABAMA

LOUISIANA

TEXAS

OKLAHOMA

KANSAS

NEBRASKA

NEVADA

UTAH

WYOMING

IDAHO

MONTANA

WISCONSIN

ILLINOIS

INDIANA

MICHIGAN

OHIO

PENNSYLVANIA

DELAWARE

MARYLAND

DELaware

VIRGINIA

NORTH CAROLINA

SOUTH CAROLINA

MISSISSIPPI

ALABAMA

LOUISIANA

TEXAS

OKLAHOMA

KANSAS

NEBRASKA

NEVADA

UTAH

WYOMING

IDAHO

MONTANA

WISCONSIN

ILLINOIS

INDIANA

MICHIGAN

OHIO

PENNSYLVANIA

DELAWARE

MARYLAND

DELaware

VIRGINIA

NORTH CAROLINA

SOUTH CAROLINA

MISSISSIPPI

ALABAMA

LOUISIANA

TEXAS

OKLAHOMA

KANSAS

NEBRASKA

NEVADA

UTAH

WYOMING

IDAHO

MONTANA

WISCONSIN

ILLINOIS

INDIANA

MICHIGAN

OHIO

PENNSYLVANIA

DELAWARE

MARYLAND

DELaware

VIRGINIA

NORTH CAROLINA

SOUTH CAROLINA

MISSISSIPPI

ALABAMA

LOUISIANA

TEXAS

OKLAHOMA

KANSAS

NEBRASKA

NEVADA

UTAH

WYOMING

IDAHO

MONTANA

WISCONSIN

ILLINOIS

INDIANA

MICHIGAN

OHIO

PENNSYLVANIA

DELAWARE

MARYLAND

DELaware

VIRGINIA

NORTH CAROLINA

SOUTH CAROLINA

MISSISSIPPI

ALABAMA

LOUISIANA

TEXAS

OKLAHOMA

KANSAS

NEBRASKA

NEVADA

UTAH

WYOMING

IDAHO

MONTANA

WISCONSIN

ILLINOIS

INDIANA

MICHIGAN

OHIO

PENNSYLVANIA

DELAWARE

MARYLAND

DELaware

VIRGINIA

NORTH CAROLINA

SOUTH CAROLINA

MISSISSIPPI

ALABAMA

LOUISIANA

TEXAS

OKLAHOMA

KANSAS

NEBRASKA

NEVADA

UTAH

WYOMING

IDAHO

MONTANA

WISCONSIN

ILLINOIS

INDIANA

MICHIGAN

OHIO

PENNSYLVANIA

DELAWARE

MARYLAND

DELaware

VIRGINIA

NORTH CAROLINA

SOUTH CAROLINA

MISSISSIPPI

ALABAMA

LOUISIANA

TEXAS

OKLAHOMA

KANSAS

NEBRASKA

NEVADA

UTAH

WYOMING

IDAHO

MONTANA

WISCONSIN

ILLINOIS

INDIANA

MICHIGAN

OHIO

PENNSYLVANIA

DELAWARE

MARYLAND

DELaware

VIRGINIA

NORTH CAROLINA

SOUTH CAROLINA

MISSISSIPPI

ALABAMA

LOUISIANA

TEXAS

OKLAHOMA

KANSAS

NEBRASKA

NEVADA

UTAH

WYOMING

IDAHO

MONTANA

WISCONSIN

ILLINOIS

INDIANA

MICHIGAN

OHIO

PENNSYLVANIA

DELAWARE

MARYLAND

DELaware

VIRGINIA

NORTH CAROLINA

SOUTH CAROLINA

MISSISSIPPI

ALABAMA

LOUISIANA

TEXAS

OKLAHOMA

KANSAS

NEBRASKA

NEVADA

UTAH

WYOMING

IDAHO

MONTANA

WISCONSIN

ILLINOIS

INDIANA

MICHIGAN

OHIO

PENNSYLVANIA

DELAWARE

MARYLAND

DELaware

VIRGINIA

NORTH CAROLINA

SOUTH CAROLINA

MISSISSIPPI

ALABAMA

LOUISIANA

TEXAS

OKLAHOMA

KANSAS

NEBRASKA

NEVADA

UTAH

WYOMING

IDAHO

MONTANA

WISCONSIN

ILLINOIS

INDIANA

MICHIGAN

OHIO

PENNSYLVANIA

DELAWARE

MARYLAND

DELaware

VIRGINIA

NORTH CAROLINA

SOUTH CAROLINA

MISSISSIPPI

ALABAMA

LOUISIANA

TEXAS

OKLAHOMA

KANSAS

NEBRASKA

NEVADA

UTAH

WYOMING

IDAHO

MONTANA

WISCONSIN

ILLINOIS

INDIANA

MICHIGAN

OHIO

PENNSYLVANIA

DELAWARE

MARYLAND

DELaware

VIRGINIA

NORTH CAROLINA

SOUTH CAROLINA

MISSISSIPPI

ALABAMA

LOUISIANA

TEXAS

OKLAHOMA

KANSAS

NEBRASKA

NEVADA

UTAH

WYOMING

IDAHO

MONTANA

WISCONSIN

ILLINOIS

INDIANA

MICHIGAN

OHIO

PENNSYLVANIA

DELAWARE

MARYLAND

DELaware

VIRGINIA

NORTH CAROLINA

SOUTH CAROLINA

MISSISSIPPI

ALABAMA

LOUISIANA

TEXAS

OKLAHOMA

KANSAS

NEBRASKA

NEVADA

UTAH

WYOMING

IDAHO

MONTANA

WISCONSIN

ILLINOIS

INDIANA

MICHIGAN

OHIO

PENNSYLVANIA

DELAWARE

MARYLAND

DELaware

VIRGINIA

NORTH CAROLINA

SOUTH CAROLINA

MISSISSIPPI

ALABAMA

LOUISIANA

TEXAS

OKLAHOMA

KANSAS

NEBRASKA

NEVADA

UTAH

WYOMING

IDAHO

MONTANA

WISCONSIN

ILLINOIS

INDIANA

MICHIGAN

OHIO

PENNSYLVANIA

DELAWARE

MARYLAND

DELaware

VIRGINIA

NORTH CAROLINA

SOUTH CAROLINA

MISSISSIPPI

ALABAMA

LOUISIANA

TEXAS

OKLAHOMA

KANSAS

NEBRASKA

NEVADA

UTAH

WYOMING

IDAHO

MONTANA

WISCONSIN

ILLINOIS

INDIANA

MICHIGAN

OHIO

PENNSYLVANIA

DELAWARE

MARYLAND

DELaware

VIRGINIA

NORTH CAROLINA

SOUTH CAROLINA

MISSISSIPPI

ALABAMA

LOUISIANA

TEXAS

OKLAHOMA

KANSAS

NEBRASKA

NEVADA

UTAH

WYOMING

IDAHO

MONTANA

WISCONSIN

ILLINOIS

INDIANA

MICHIGAN

OHIO

PENNSYLVANIA

DELAWARE

MARYLAND

DELaware

VIRGINIA

NORTH CAROLINA

SOUTH CAROLINA

MISSISSIPPI

ALABAMA

LOUISIANA

TEXAS

OKLAHOMA

KANSAS

NEBRASKA

NEVADA

UTAH

WYOMING

IDAHO

MONTANA

WISCONSIN

ILLINOIS

INDIANA

MICHIGAN

OHIO

PENNSYLVANIA

DELAWARE

MARYLAND

DELaware

VIRGINIA

NORTH CAROLINA

SOUTH CAROLINA

MISSISSIPPI

ALABAMA

LOUISIANA

TEXAS

OKLAHOMA

KANSAS

NEBRASKA

NEVADA

UTAH

WYOMING

IDAHO

MONTANA

WISCONSIN

ILLINOIS

INDIANA

MICHIGAN

OHIO

PENNSYLVANIA

DELAWARE

MARYLAND

DELaware

VIRGINIA

NORTH CAROLINA

SOUTH CAROLINA

MISSISSIPPI

ALABAMA

LOUISIANA

TEXAS

OKLAHOMA

KANSAS

NEBRASKA

NEVADA

UTAH

WYOMING

IDAHO

MONTANA

WISCONSIN

ILLINOIS

INDIANA

MICHIGAN

OHIO

PENNSYLVANIA

DELAWARE

MARYLAND

DELaware

VIRGINIA

NORTH CAROLINA

SOUTH CAROLINA

MISSISSIPPI

ALABAMA

LOUISIANA

TEXAS

OKLAHOMA

KANSAS

NEBRASKA

NEVADA

UTAH

WYOMING

IDAHO

MONTANA

WISCONSIN

ILLINOIS

INDIANA

MICHIGAN

OHIO

PENNSYLVANIA

DELAWARE

MARYLAND

DELaware

VIRGINIA

NORTH CAROLINA

SOUTH CAROLINA

MISSISSIPPI

ALABAMA

LOUISIANA

TEXAS

OKLAHOMA

KANSAS

NEBRASKA

NEVADA

UTAH

WYOMING

IDAHO

MONTANA

WISCONSIN

ILLINOIS

INDIANA

MICHIGAN

OHIO

PENNSYLVANIA

DELAWARE

MARYLAND

DELaware

VIRGINIA

NORTH CAROLINA

SOUTH CAROLINA

MISSISSIPPI

ALABAMA

LOUISIANA

TEXAS

OKLAHOMA

KANSAS

NEBRASKA

NEVADA

UTAH

WYOMING

IDAHO

MONTANA

WISCONSIN

ILLINOIS

INDIANA

MICHIGAN

OHIO

PENNSYLVANIA

DELAWARE

MARYLAND

DELaware

VIRGINIA

NORTH CAROLINA

SOUTH CAROLINA

MISSISSIPPI

ALABAMA

LOUISIANA

TEXAS

OKLAHOMA

KANSAS

NEBRASKA

NEVADA

UTAH

WYOMING

IDAHO

MONTANA

WISCONSIN

ILLINOIS

INDIANA

MICHIGAN

OHIO

PENNSYLVANIA

DELAWARE

MARYLAND

DELaware

VIRGINIA

NORTH CAROLINA

SOUTH CAROLINA

MISSISSIPPI

ALABAMA

LOUISIANA

TEXAS

OKLAHOMA

KANSAS

NEBRASKA

NEVADA

UTAH

WYOMING

IDAHO

MONTANA

WISCONSIN

ILLINOIS

INDIANA

MICHIGAN

OHIO

PENNSYLVANIA

DELAWARE

MARYLAND

DELaware

VIRGINIA

NORTH CAROLINA

SOUTH CAROLINA

MISSISSIPPI

ALABAMA

LOUISIANA

TEXAS

OKLAHOMA

KANSAS

NEBRASKA

NEVADA

UTAH

WYOMING

IDAHO

MONTANA

WISCONSIN

ILLINOIS

INDIANA

MICHIGAN

OHIO

PENNSYLVANIA

DELAWARE

MARYLAND

DELaware

VIRGINIA

NORTH CAROLINA

SOUTH CAROLINA

MISSISSIPPI

ALABAMA

LOUISIANA

TEXAS

OKLAHOMA

KANSAS

NEBRASKA

NEVADA

UTAH

WYOMING

IDAHO

MONTANA

WISCONSIN

ILLINOIS

INDIANA

MICHIGAN

OHIO

PENNSYLVANIA

DELAWARE

MARYLAND

DELaware

VIRGINIA

NORTH CAROLINA

SOUTH CAROLINA

MISSISSIPPI

ALABAMA

LOUISIANA

TEXAS

OKLAHOMA

KANSAS

NEBRASKA

NEVADA

UTAH

WYOMING

IDAHO

MONTANA

WISCONSIN

ILLINOIS

INDIANA

MICHIGAN

OHIO

PENNSYLVANIA

DELAWARE

MARYLAND

DELaware

VIRGINIA

NORTH CAROLINA

SOUTH CAROLINA

MISSISSIPPI

ALABAMA

LOUISIANA

TEXAS

OKLAHOMA

KANSAS

NEBRASKA

NEVADA

UTAH

WYOMING

IDAHO

MONTANA

WISCONSIN

ILLINOIS

INDIANA

MICHIGAN

OHIO

PENNSYLVANIA

DELAWARE

MARYLAND

DELaware

VIRGINIA

NORTH CAROLINA

SOUTH CAROLINA

MISSISSIPPI

ALABAMA

LOUISIANA

TEXAS

OKLAHOMA

KANSAS

NEBRASKA

NEVADA

UTAH

WYOMING

IDAHO

MONTANA

WISCONSIN

ILLINOIS

INDIANA

MICHIGAN

OHIO

PENNSYLVANIA

DELAWARE

MARYLAND

DELaware

VIRGINIA

NORTH CAROLINA

SOUTH CAROLINA

MISSISSIPPI

ALABAMA

LOUISIANA

TEXAS

OKLAHOMA

KANSAS

NEBRASKA

NEVADA

UTAH

WYOMING

IDAHO

MONTANA

WISCONSIN

ILLINOIS

INDIANA

MICHIGAN

OHIO

PENNSYLVANIA

DELAWARE

MARYLAND

DELaware

VIRGINIA

NORTH CAROLINA

SOUTH CAROLINA

MISSISSIPPI

ALABAMA

LOUISIANA

TEXAS

OKLAHOMA

KANSAS

NEBRASKA

NEVADA

UTAH

WYOMING

IDAHO

MONTANA

WISCONSIN

ILLINOIS

INDIANA

MICHIGAN

OHIO

PENNSYLVANIA

DELAWARE

MARYLAND

DELaware

VIRGINIA

NORTH CAROLINA

SOUTH CAROLINA

MISSISSIPPI

ALABAMA

LOUISIANA

TEXAS

OKLAHOMA

KANSAS

NEBRASKA

NEVADA

UTAH

WYOMING

IDAHO

MONTANA

WISCONSIN

ILLINOIS

INDIANA

MICHIGAN

OHIO

PENNSYLVANIA

DELAWARE

MARYLAND

DELaware

VIRGINIA

NORTH CAROLINA

SOUTH CAROLINA

MISSISSIPPI

ALABAMA

LOUISIANA

TEXAS

OKLAHOMA

KANSAS

NEBRASKA

NEVADA

UTAH

WYOMING

IDAHO

MONTANA

WISCONSIN

ILLINOIS

INDIANA

MICHIGAN

OHIO

PENNSYLVANIA

DELAWARE

MARYLAND

DELaware

VIRGINIA

NORTH CAROLINA

SOUTH CAROLINA

MISSISSIPPI

ALABAMA

LOUISIANA

TEXAS

OKLAHOMA

KANSAS

NEBRASKA

NEVADA

UTAH

WYOMING

IDAHO

MONTANA

WISCONSIN

ILLINOIS

INDIANA

MICHIGAN

OHIO

PENNSYLVANIA

DELAWARE

MARYLAND

DELaware

VIRGINIA

NORTH CAROLINA

SOUTH CAROLINA

MISSISSIPPI

ALABAMA

LOUISIANA

TEXAS

OKLAHOMA

KANSAS

NEBRASKA

NEVADA

UTAH

WYOMING

IDAHO

MONTANA

WISCONSIN

ILLINOIS

INDIANA

MICHIGAN

OHIO

PENNSYLVANIA

DELAWARE

MARYLAND

DELaware

VIRGINIA

NORTH CAROLINA

SOUTH CAROLINA

MISSISSIPPI

ALABAMA

LOUISIANA

TEXAS

OKLAHOMA

KANSAS

NEBRASKA

NEVADA

UTAH

WYOMING

IDAHO

MONTANA

WISCONSIN

ILLINOIS

INDIANA

MICHIGAN

OHIO

PENNSYLVANIA

DELAWARE

MARYLAND

DELaware

VIRGINIA

NORTH CAROLINA

SOUTH CAROLINA

MISSISSIPPI

ALABAMA

LOUISIANA

TEXAS

OKLAHOMA

KANSAS

NEBRASKA

NEVADA

UTAH

WYOMING

IDAHO

MONTANA

WISCONSIN

ILLINOIS

INDIANA

MICHIGAN

OHIO

PENNSYLVANIA

DELAWARE

MARYLAND

DELaware

VIRGINIA

NORTH CAROLINA

SOUTH CAROLINA

MISSISSIPPI

ALABAMA

LOUISIANA

TEXAS

OKLAHOMA

KANSAS

NEBRASKA

NEVADA

UTAH

WYOM