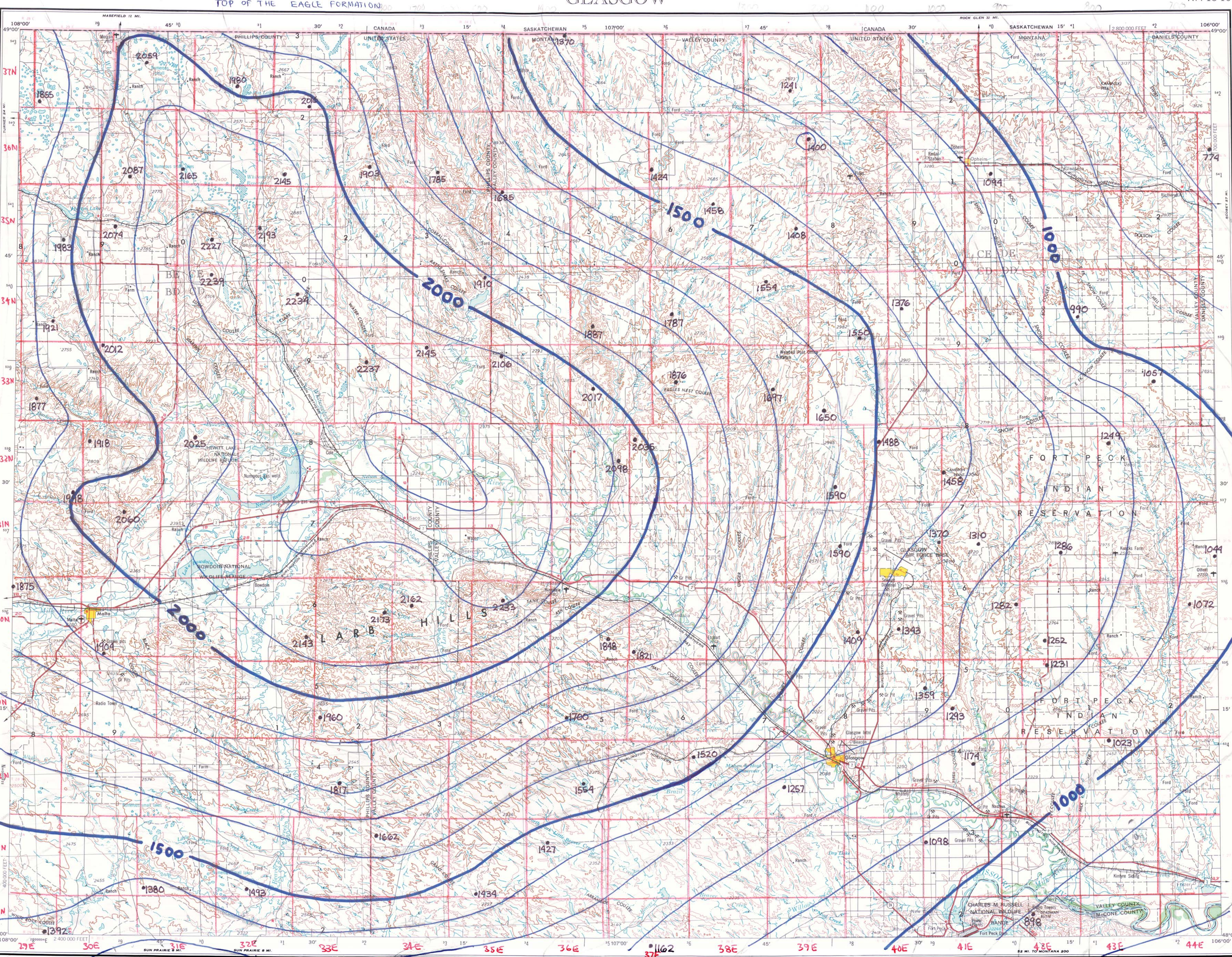


WESTERN UNITED STATES 1:250,000  
TOP OF THE EAGLE FORMATION  
GLASGOW  
NM 13-10



Prepared by the Defense Mapping Agency Topographic Center, Washington, D. C. Compiled in 1955 by photogrammetric methods from aerial photographs taken 1951-1952. Photographs field annotated 1954. Revised by the U. S. Geological Survey from aerial photographs taken 1973 and 1975. Map edited in 1977.

100,000-foot grid based on Montana coordinate system, north zone.

Location of geodetic control established by government agencies is shown on corresponding 1:250,000-scale Geodetic Control Diagram.

**Data points from:**  
Feltis, R.D., Lewis, B.D., Frasure, R.L., Rioux, R.P., Jauhola, C.A. and Hotchkiss, W.R., 1981, Selected Geologic Data from the Northern Great Plains area of Montana: U.S. Geological Survey Water-Resources Investigations Open-File report 81-415, 63 p.

Contoured by R.N. Bergantino, 1982

**LEGEND**

Figures in red denote approximate distances in miles between stars

**POPULATED PLACES**

Over 500,000  
100,000 to 500,000  
25,000 to 100,000  
5,000 to 25,000  
1,000 to 5,000  
Less than 1,000

**ROADS**

Primary, all-weather, hard surface  
Secondary, all-weather, hard surface  
Light-duty, all-weather, hard or improved surface  
Fair or dry weather, unimproved surface  
Trail  
Interchange

**RAILROADS**

Single track Double or Multiple track  
Standard gauge  
Narrow gauge

**BOUNDARIES**

International  
State/Province  
County  
Park or reservation

**Other**

Landmark: School; Church; Other  
Spot elevation in feet  
Marsh or swamp  
Intermittent or dry stream  
Woods/brushwood  
Power line  
Landing airport  
Seaplane airport  
Dry lake  
Woods/brushwood

**Scale 1:250,000**

0 5 10 15 20 25 30 Statute Miles  
0 5 10 15 20 25 30 Kilometers

**CONTOUR INTERVAL 100 FEET**

**TRANSVERSE MERCATOR PROJECTION**

BLACK NUMBERED LINES INDICATE THE 10,000 METER UNIVERSAL TRANSVERSE MERCATOR GRID, ZONE 13

1977 MAGNETIC DECLINATION FROM TRUE NORTH VARIES FROM 161°-120' (20 MI) EASTERLY FOR THE CENTER OF THE WEST TO 10°-12° (20 MI) WESTERLY FOR THE CENTER OF THE EAST EDGE

FOR SALE BY U.S. GEOLOGICAL SURVEY, DENVER, COLORADO 80225, OR RESTON, VIRGINIA 22092

**LOCATION DIAGRAM**

ALBERTA CANADA  
SASKATCHEWAN  
MONTANA  
NEBRASKA  
KANSAS  
OKLAHOMA  
TEXAS  
LOUISIANA  
MISSISSIPPI  
ALABAMA  
GEORGIA  
FLORIDA  
ARIZONA  
NEW MEXICO  
UTAH  
IDAHO  
WYOMING  
COLORADO  
NEVADA  
CALIFORNIA  
OREGON  
WASHINGTON  
BRITISH COLUMBIA  
ALASKA  
HAWAII

**SECTIONIZED TOWNSHIP**

6 5 4 3 2 1  
7 8 9 10 11 12  
13 14 15 16 17 18  
19 20 21 22 23 24  
25 26 27 28 29 30  
31 32 33 34 35 36

**GRID ZONE DESIGNATION**

13U  
100,000 M. SQUARE IDENTIFICATION  
SAMPLE POINT: 100,000 METER  
TO GIVE A STANDARD REFERENCE ON THIS SHEET TO NEAREST 100 METERS

**TO GIVE A STANDARD REFERENCE ON THIS SHEET TO NEAREST 100 METERS**

1. Read letters identifying 100,000 meter square in which the point lies.  
2. Locate first VERTICAL grid line to LEFT of point and read LARGE figure labeling the line either in the top or bottom margin, or on the line itself.  
3. Estimate tenths from grid line to point.  
4. Locate first HORIZONTAL grid line BELOW point and read LARGE figure labeling the line either in the left or right margin, or on the line itself.  
5. Estimate tenths from grid line to point.  
6. If reporting beyond 10' in any direction, prefix Grid Zone Designation, as:

Top of the Eagle Formation/Gammon Shale, feet, mean sea level