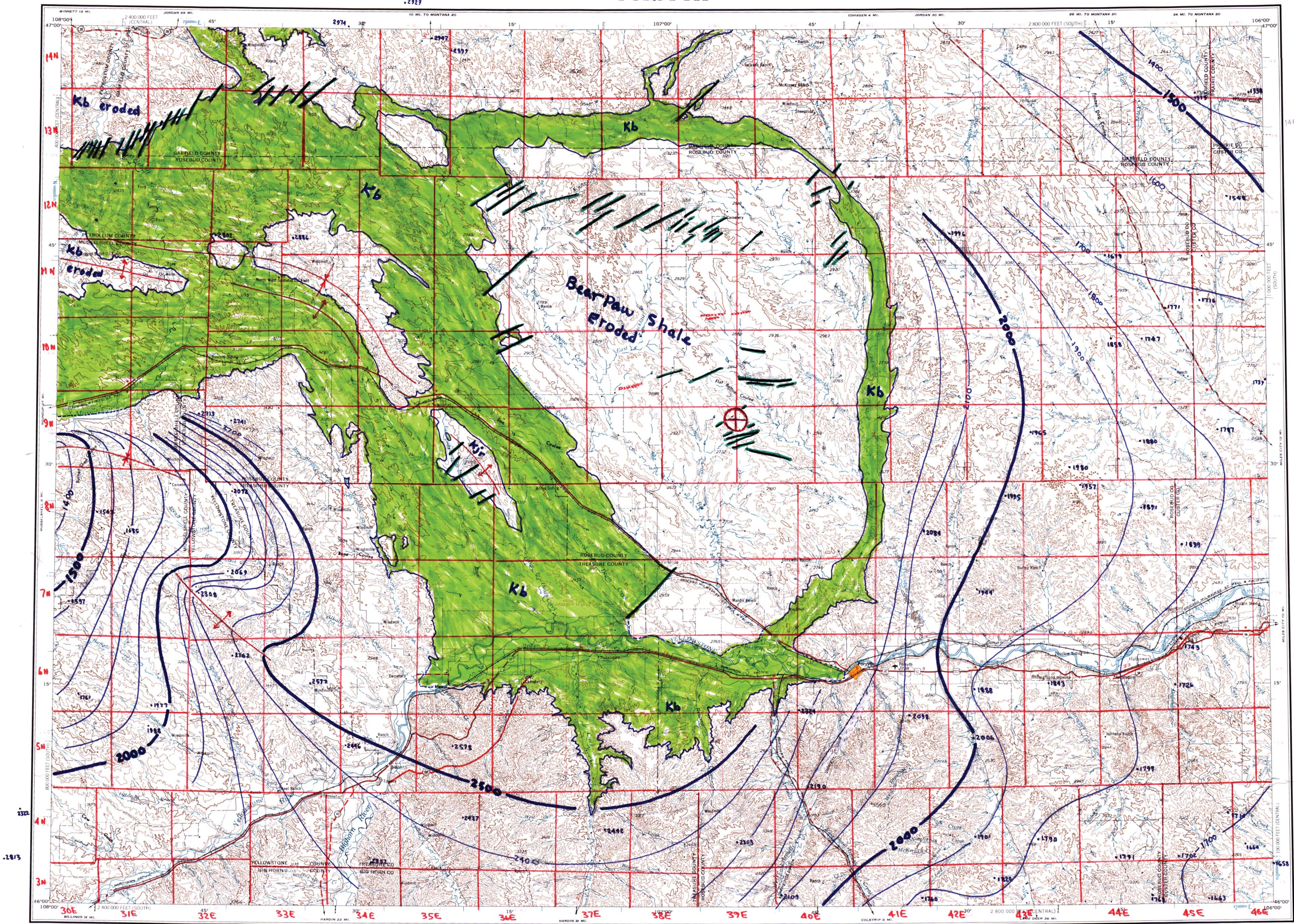


WESTERN UNITED STATES 1:250,000

FORSYTH

NL 13-4



Prepared by the Army Map Service (AJAR), Corps of Engineers, U.S. Army, Washington, D.C. Compiled in 1955 by photogrammetric methods. Horizontal and vertical control by USCGS and USCE. Aerial photography 1953. Photography field annotated in 1954. Limited revision by U.S. Geological Survey 1965.

100,000-foot grids based on Montana coordinate system, south and central zones.

10,000-meter Universal Transverse Mercator grid ticks, zone 13, shown.

Data points from:
Feltis, R.D., Lewis, B.D., Frasure, R.L., Rioux, R.P., Jauhola, C.A. and Hotchkiss, W.R., 1981. Selected Geologic Data from the Northern Great Plains area of Montana: U.S. Geological Survey Water-Resources Investigations Open-file report 81-415, 63 p., Contoured by R.N. Bergantino, 2012.

LEGEND
ROAD DATA 1954 PARTIALLY REVISED 1965
Figures in feet denote approximate elevations in miles between stars

POPULATED PLACES
Over 500,000
100,000 to 500,000
25,000 to 100,000
5,000 to 25,000
1,000 to 5,000

**LOS ANGELES
OMAHA
GALVESTON
Laramie
Grand Coulee
Sun Valley**

ROADS
Hard surface, heavy duty
More than two lanes wide
Two lanes wide, Federal route marker
Hard surface, medium duty
More than two lanes wide
Two lanes wide, State, Interstate route markers
Improved light duty
Unimproved dirt
Trail

LANDMARKS
Landplane airport
Landing area
Seaplane airport
Seaplane anchorage
Woods/brushwood
Power line

Other symbols:
Landmarks: School; Church; Other
Spot elevation in feet
Marsh or swamp
Intermittent or dry stream
Power line

Scale 1:250,000
0 5 10 15 20 25 30 Statute Miles
0 5 10 15 20 25 30 Kilometers
0 5 10 15 20 25 30 Nautical Miles

CONTOUR INTERVAL 100 FEET
WITH SUPPLEMENTARY CONTOURS AT 50 FOOT INTERVALS
TRANSVERSE MERCATOR PROJECTION

1960 MAGNETIC DECLINATION FOR THIS SHEET VARIES FROM 16°45' EASTERLY FOR THE CENTER OF THE WEST EDGE TO 19°30' EASTERLY FOR THE CENTER OF THE EAST EDGE. MEAN ANNUAL CHANGE IS 0°02' WESTERLY.

FOR SALE BY U.S. GEOLOGICAL SURVEY, DENVER, COLORADO 80225, OR WASHINGTON, D.C. 20242

Top of the Bearpaw Shale, feet, mean sea level

LOCATION DIAGRAM

SECTIONIZED TOWNSHIP

6	5	4	3	2	1
7	6	5	4	3	2
8	7	6	5	4	3
9	8	7	6	5	4
10	9	8	7	6	5
11	10	9	8	7	6
12	11	10	9	8	7
13	12	11	10	9	8
14	13	12	11	10	9
15	14	13	12	11	10
16	15	14	13	12	11
17	16	15	14	13	12
18	17	16	15	14	13
19	18	17	16	15	14
20	19	18	17	16	15
21	20	19	18	17	16
22	21	20	19	18	17
23	22	21	20	19	18
24	23	22	21	20	19
25	24	23	22	21	20
26	25	24	23	22	21
27	26	25	24	23	22
28	27	26	25	24	23
29	28	27	26	25	24
30	29	28	27	26	25
31	30	29	28	27	26
32	31	30	29	28	27
33	32	31	30	29	28
34	33	32	31	30	29
35	34	33	32	31	30
36	35	34	33	32	31

FORSYTH, MONTANA
1954
LIMITED REVISION 1965