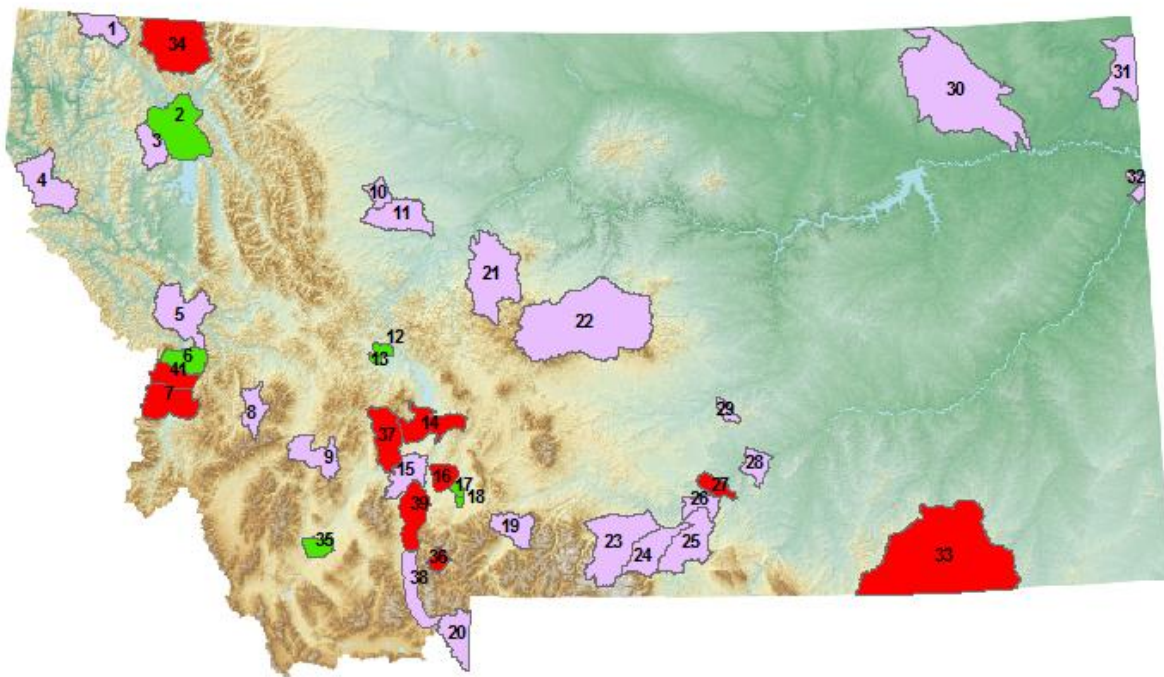


## Ground Water Investigation Program Nominated Projects for 2011-2013

The 2007/2008 Water Policy Interim Committee (WPIC) recognized that competition for water resources and the lack of detailed information on groundwater/surface water interaction has challenged informed water-resource management and development in Montana. The WPIC found that "continued and expanded study of groundwater resources is vital to shaping statewide policy as well as providing the data necessary for local decisions regarding water." The Groundwater Investigation program was funded by the 61st Montana Legislature with a first biennium appropriation of \$4.2 million; based on the program design, this will provide funding for 6 to 8 projects lasting 1 to 3 years.

The first seven projects are underway in the 2009-2011 timeframe (green areas on the map). Projects for the 2011-2013 timeframe have been nominated, as shown in red. The pink areas are all proposed as potential future GWIP study areas.



- |                                |                      |                                       |  |
|--------------------------------|----------------------|---------------------------------------|--|
| 1 Eureka                       | 14 Townsend, Toston  | 28 East Billings                      | 39 Madison Valley Ennis to Three Forks |
| 2 Flathead Valley              | 15 Three Forks       | 29 Roundup                            | 40 Jefferson Valley                    |
| 3 Smith Valley                 | 16 Manhattan         | 30 Flaxville Gravels                  | 41 Stevensville Bitterroot River       |
| 4 Noxon                        | 17 Belgrade          | 31 Clear Lake                         |  |
| 5 Missoula Valley              | 18 Four Corners      | 32 Sidney                             |  |
| 6 Florence                     | 19 Pine Creek        | 33 Coalbed methane West               |  |
| 7 Hamilton                     | 20 W. Yellowstone    | 34 NF Flathead                        |  |
| 8 Georgetown Lake, Philipsburg | 21 Belt, Monarch     | 35 Lower Beaverhead                   |  |
| 9 Summit Valley                | 22 Little Belt Mts   | 36 Big Sky                            |  |
| 10 Priest Butte Lk             | 23 Stillwater Valley | 37 Boulder River                      |  |
| 11 Greenfield Bench            | 24 Rock Creek        | 38 Madison Valley Quake Lake to Ennis |  |
| 12 North Hills                 | 25 Pryor Mts         |                                       |  |
| 13 Scratchgravel Hills         | 26 Park City         |                                       |  |
|                                | 27 West Billings     |                                       |  |